

For Research Use Only

# Dystrophin Polyclonal antibody

Catalog Number: 12715-1-AP

Featured Product

31 Publications



## Basic Information

### Catalog Number:

12715-1-AP

### Concentration:

1000 ug/ml

### Source:

Rabbit

### Isotype:

IgG

### Immunogen Catalog Number:

AG3408

### GenBank Accession Number:

BC028720

### GeneID (NCBI):

1756

### UNIPROT ID:

P11532

### Full Name:

dystrophin

### Calculated MW:

3685 aa, 427 kDa

### Observed MW:

70 kDa, 430 kDa

### Purification Method:

Antigen affinity purification

### Recommended Dilutions:

WB 1:5000-1:50000

IP 0.5-4.0 ug for 1.0-3.0 mg of total protein lysate

IHC 1:1000-1:4000

IF 1:20-1:200

## Applications

### Tested Applications:

WB, IHC, IF, IP, ELISA

### Cited Applications:

WB, IHC, IF, IP, CoIP

### Species Specificity:

human, mouse, rat

### Cited Species:

human, mouse, rat

**Note-IHC: suggested antigen retrieval with TE buffer pH 9.0; (\*) Alternatively, antigen retrieval may be performed with citrate buffer pH 6.0**

### Positive Controls:

**WB:** HepG2 cells, mouse brain tissue, mouse lung, rat brain

**IP:** mouse brain tissue,

**IHC:** mouse skeletal muscle tissue, human heart tissue, human normal colon, human skeletal muscle tissue, mouse heart tissue

**IF:** mouse skeletal muscle tissue, rat heart tissue

## Background Information

Dystrophin (DMD or BMD) is a large muscle protein whose mutations cause Duchenne muscular dystrophy (DMD) and Becker muscular dystrophy (BMD), the childhood neuromuscular disorders that result in progressive muscle weakness, respiratory difficulties and cardiovascular dysfunction. Dystrophin is a crucial component of the dystrophin-glycoprotein complex which is essential for muscle membrane integrity and stability. Dystrophin is located on the cytoplasmic face of the sarcolemma and connects the cytoskeletal network to the sarcolemma and extracellular matrix. Multiple isoforms of dystrophin exist due to the alternative splicing, with a wide range of MW (69-72, 110-143, 271, 426 kDa). Most tissues contain transcripts of several isoforms.

## Notable Publications

Author	Pubmed ID	Journal	Application
Takahiro Fujimoto	32996569	Hum Mol Genet	WB,IP,IF
Jihad El Andari	36129972	Sci Adv	WB,IF
Wen-Tong Liu	30340642	J Neuroinflammation	WB

## Storage

### Storage:

Store at -20°C. Stable for one year after shipment.

### Storage Buffer:

PBS with 0.02% sodium azide and 50% glycerol pH 7.3.

Aliquoting is unnecessary for -20°C storage

For technical support and original validation data for this product please contact:

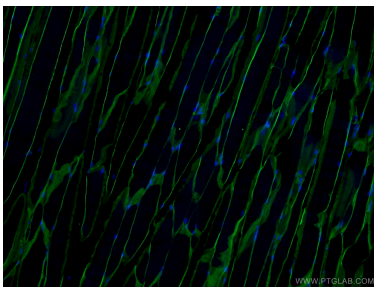
T: 4006900926

E: [Proteintech-CN@ptglab.com](mailto:Proteintech-CN@ptglab.com)

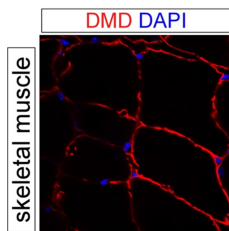
W: [ptgcn.com](http://ptgcn.com)

**This product is exclusively available under Proteintech Group brand and is not available to purchase from any other manufacturer.**

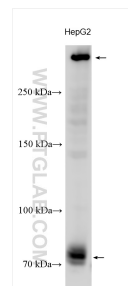
## Selected Validation Data



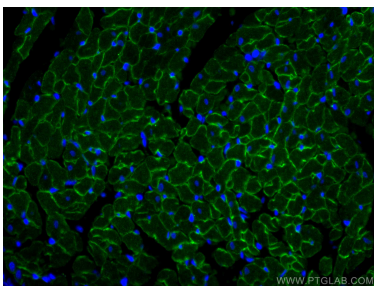
Immunofluorescent analysis of (4% PFA) fixed mouse skeletal muscle tissue using 12715-1-AP (Dystrophin antibody) at dilution of 1:50 and Alexa Fluor 488-conjugated AffiniPure Goat Anti-Rabbit IgG(H+L).



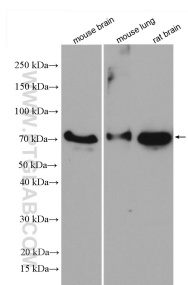
IF result of anti-DMD (12715-1-AP, 1:500) with PFA fixed mouse skeletal muscle tissue by Dr. Daniel Kopinke.



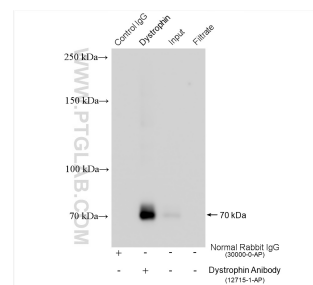
Various lysates were subjected to SDS PAGE followed by western blot with 12715-1-AP (Dystrophin antibody) at dilution of 1:15000 incubated at room temperature for 1.5 hours.



Immunofluorescent analysis of (4% PFA) fixed rat heart tissue using Dystrophin antibody (12715-1-AP) at dilution of 1:200 and CoraLite®488-Conjugated AffiniPure Goat Anti-Rabbit IgG(H+L), Connexin 43 antibody (26980-1-AP, green).



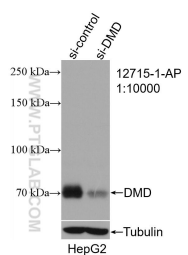
Various lysates were subjected to SDS PAGE followed by western blot with 12715-1-AP (Dystrophin antibody) at dilution of 1:5000 incubated at room temperature for 1.5 hours.



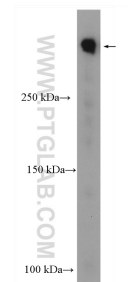
IP result of anti-Dystrophin (IP:12715-1-AP, 4ug;  
Detection:12715-1-AP 1:20000) with mouse brain  
tissue lysate 1280 ug.



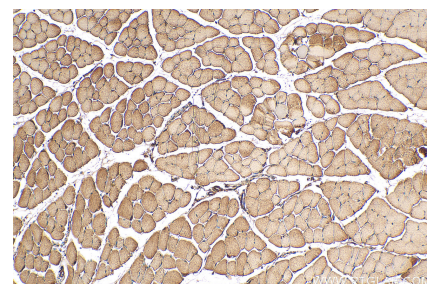
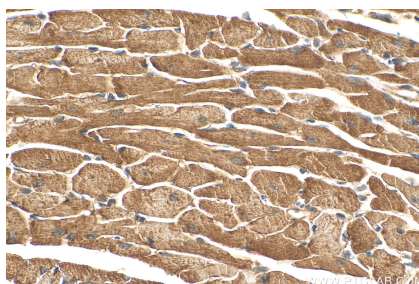
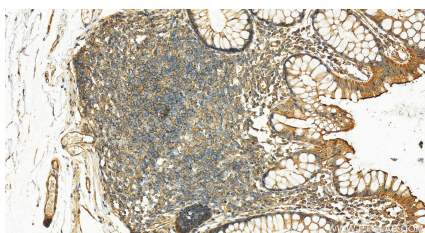
Immunohistochemical analysis of paraffin-embedded human skeletal muscle tissue slide using 12715-1-AP (Dystrophin antibody at dilution of 1:200 (under 40x lens).



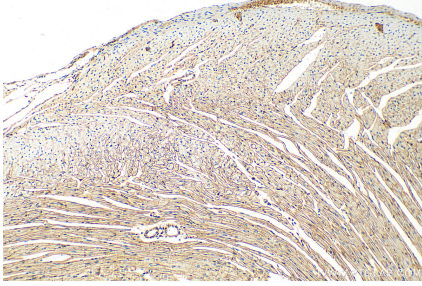
WB result of Dystrophin antibody (12715-1-AP; 1:10000; incubated at room temperature for 1.5 hours) with sh-Control and sh-Dystrophin transfected HepG2 cells.



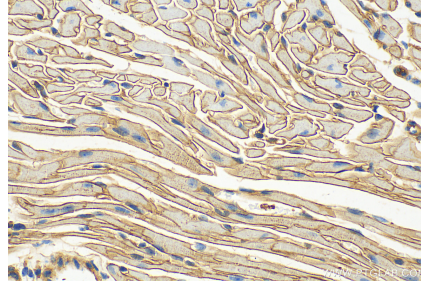
HepG2 cells were subjected to SDS PAGE followed by western blot with 12715-1-AP (Dystrophin antibody) at dilution of 1:20000 incubated at room temperature for 1.5 hours.



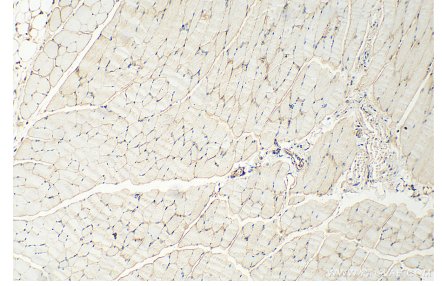
Immunohistochemical analysis of paraffin-embedded human normal colon slide using 12715-1-AP (Dystrophin antibody) at dilution of 1:1000 (under 20x lens). Heat mediated antigen retrieval with Tris-EDTA buffer (pH 9.0).



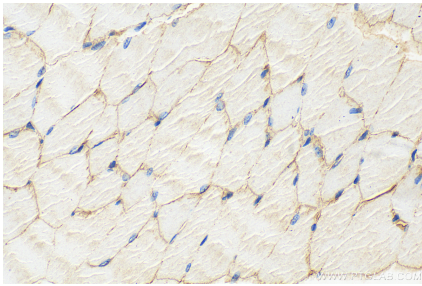
Immunohistochemical analysis of paraffin-embedded mouse heart tissue slide using 12715-1-AP (Dystrophin antibody) at dilution of 1:200 (under 40x lens). Heat mediated antigen retrieval with Tris-EDTA buffer (pH 9.0).



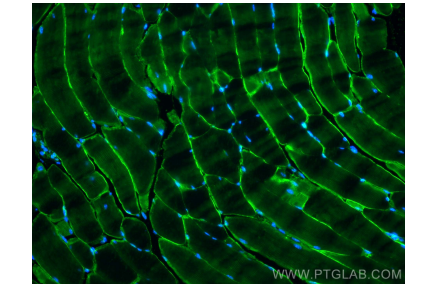
Immunohistochemical analysis of paraffin-embedded mouse skeletal muscle tissue slide using 12715-1-AP (Dystrophin antibody) at dilution of 1:200 (under 10x lens). Heat mediated antigen retrieval with Tris-EDTA buffer (pH 9.0).



Immunohistochemical analysis of paraffin-embedded mouse heart tissue slide using 12715-1-AP (Dystrophin antibody) at dilution of 1:4000 (under 10x lens).

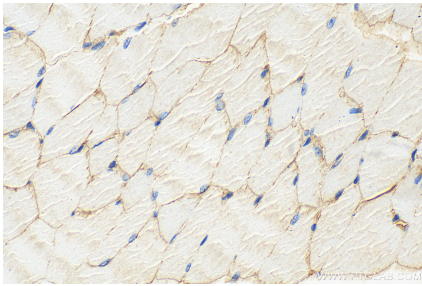


Immunohistochemical analysis of paraffin-embedded mouse heart tissue slide using 12715-1-AP (Dystrophin antibody) at dilution of 1:4000 (under 40x lens).



Immunohistochemical analysis of paraffin-embedded mouse skeletal muscle tissue slide using 12715-1-AP (Dystrophin antibody) at dilution of 1:2000 (under 10x lens).

Immunohistochemical analysis of paraffin-embedded mouse skeletal muscle tissue slide using 12715-1-AP (Dystrophin antibody) at dilution of 1:2000 (under 40x lens).



Immunofluorescent analysis of (4% PFA) fixed paraffin-embedded mouse skeletal muscle tissue using Dystrophin antibody (12715-1-AP) at dilution of 1:200 and CoraLite®488-Conjugated AffiniPure Goat Anti-Rabbit IgG(H+L). Heat mediated antigen retrieval with Tris-EDTA buffer (pH 9.0).

