

For Research Use Only

TRAM1 Polyclonal antibody

Catalog Number: 12705-1-AP

4 Publications



Basic Information

Catalog Number:

12705-1-AP

Size:

400 µg/ml

Source:

Rabbit

Isotype:

IgG

Immunogen Catalog Number:

AG3384

GenBank Accession Number:

BC037738

GeneID (NCBI):

23471

UNIPROT ID:

Q15629

Full Name:

translocation associated membrane protein 1

Calculated MW:

374 aa, 43 kDa

Observed MW:

43 kDa

Purification Method:

Antigen affinity purification

Recommended Dilutions:

WB 1:500-1:2000

IHC 1:20-1:200

IF/ICC 1:10-1:100

Applications

Tested Applications:

WB, IHC, IF/ICC, ELISA

Cited Applications:

WB

Species Specificity:

human, mouse, rat

Cited Species:

human, mouse, rat

Note-IHC: suggested antigen retrieval with TE buffer pH 9.0; (*) Alternatively, antigen retrieval may be performed with citrate buffer pH 6.0

Positive Controls:

WB : K-562 cells, HeLa cells, Jurkat cells, PC-3 cells

IHC : human prostate cancer tissue,

IF/ICC : PC-3 cells,

Background Information

Notable Publications

Author	Pubmed ID	Journal	Application
Boxun Zhang	33224253	Evid Based Complement Alternat Med	WB
Han Chen	39280014	Front Endocrinol (Lausanne)	WB
Jia Ji	38723633	Mol Cell	WB

Storage

Storage:

Store at -20°C. Stable for one year after shipment.

Storage Buffer:

PBS with 0.02% sodium azide and 50% glycerol pH 7.3.

Aliquoting is unnecessary for -20°C storage

For technical support and original validation data for this product please contact:

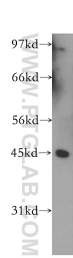
T: 4006900926

E: Proteintech-CN@ptglab.com

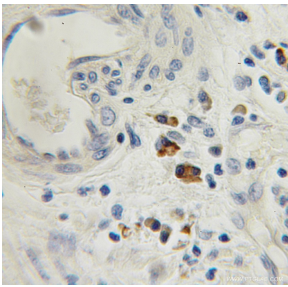
W: ptgcn.com

This product is exclusively available under Proteintech Group brand and is not available to purchase from any other manufacturer.

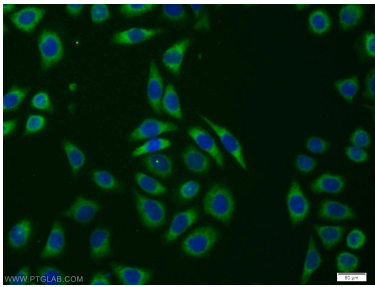
Selected Validation Data



K-562 cells were subjected to SDS PAGE followed by western blot with 12705-1-AP (TRAM1 antibody) at dilution of 1:300 incubated at room temperature for 1.5 hours.



Immunohistochemical analysis of paraffin-embedded human prostate cancer using 12705-1-AP (TRAM1 antibody) at dilution of 1:50 (under 10x lens).



Immunofluorescent analysis of PC-3 cells using 12705-1-AP (TRAM1 antibody) at dilution of 1:25 and Alexa Fluor 488-conjugated Goat Anti-Rabbit IgG(H+L).