

For Research Use Only

BMPR1A Polyclonal antibody, PBS Only

Catalog Number: 12702-1-PBS

Featured Product



Basic Information

Catalog Number:

12702-1-PBS

Concentration:

1 mg/ml

Source:

Rabbit

Isotype:

IgG

Immunogen Catalog Number:

AG3410

GenBank Accession Number:

BC028383

GeneID (NCBI):

657

UNIPROT ID:

P36894

Full Name:

bone morphogenetic protein receptor,
type IA

Calculated MW:

532 aa, 60 kDa

Observed MW:

60-68 kDa

Purification Method:

Antigen affinity purification

Applications

Tested Applications:

WB, IF/ICC, IP, Indirect ELISA

Species Specificity:

human, mouse

Background Information

Storage

Storage:

Store at -80°C.

The product is shipped with ice packs. Upon receipt, store it immediately at -80°C

Storage Buffer:

PBS only, pH7.3

For technical support and original validation data for this product please contact:

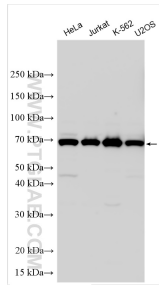
T: 4006900926

E: Proteintech-CN@ptglab.com

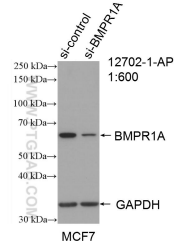
W: ptgcn.com

This product is exclusively available under Proteintech Group brand and is not available to purchase from any other manufacturer.

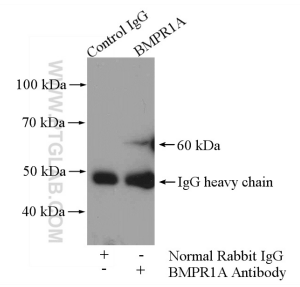
Selected Validation Data



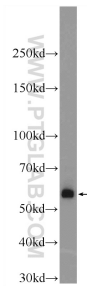
Various lysates were subjected to SDS PAGE followed by western blot with 12702-1-AP (BMPR1A antibody) at dilution of 1:1000 incubated at room temperature for 1.5 hours. This data was developed using the same antibody clone with 12702-1-PBS in a different storage buffer formulation.



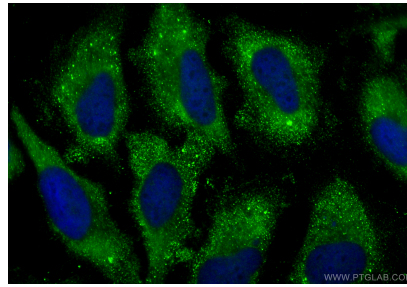
WB result of BMPR1A antibody (12702-1-AP; 1:600; incubated at room temperature for 1.5 hours) with sh-Control and sh-BMPR1A transfected MCF-7 cells. This data was developed using the same antibody clone with 12702-1-PBS in a different storage buffer formulation.



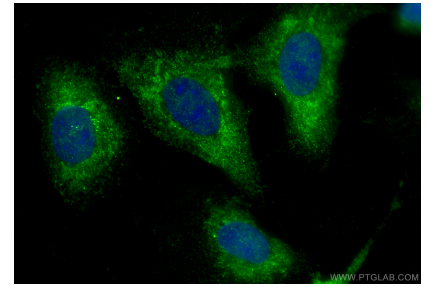
IP result of anti-BMPR1A (IP:12702-1-AP, 4ug; Detection:12702-1-AP 1:500) with HEK-293 cells lysate 2000ug. This data was developed using the same antibody clone with 12702-1-PBS in a different storage buffer formulation.



human skeletal muscle tissue were subjected to SDS PAGE followed by western blot with 12702-1-AP (BMPR1A Antibody) at dilution of 1:1000 incubated at room temperature for 1.5 hours. This data was developed using the same antibody clone with 12702-1-PBS in a different storage buffer formulation.



Immunofluorescent analysis of (-20°C Ethanol) fixed HeLa cells using BMPR1A antibody (12702-1-AP) at dilution of 1:400 and CoraLite®488-Conjugated Goat Anti-Rabbit IgG(H+L) (SA00013-2). This data was developed using the same antibody clone with 12702-1-PBS in a different storage buffer formulation.



Immunofluorescent analysis of (-20°C Ethanol) fixed U2OS cells using BMPR1A antibody (12702-1-AP) at dilution of 1:400 and CoraLite®488-Conjugated Goat Anti-Rabbit IgG(H+L) (SA00013-2). This data was developed using the same antibody clone with 12702-1-PBS in a different storage buffer formulation.