

For Research Use Only

Kir5.1 Polyclonal antibody

Catalog Number: 12696-1-AP



Basic Information

Catalog Number:

12696-1-AP

Size:

200 µg/ml

Source:

Rabbit

Isotype:

IgG

Immunogen Catalog Number:

AG3405

GenBank Accession Number:

BC033038

GeneID (NCBI):

3773

UNIPROT ID:

Q9NPI9

Full Name:

potassium inwardly-rectifying channel, subfamily J, member 16

Calculated MW:

418 aa, 48 kDa

Observed MW:

48 kDa

Purification Method:

Antigen affinity purification

Recommended Dilutions:

WB 1:500-1:1000

Applications

Tested Applications:

WB, ELISA

Species Specificity:

human, mouse, rat

Positive Controls:

WB : human brain tissue,

Background Information

Storage

Storage:

Store at -20°C. Stable for one year after shipment.

Storage Buffer:

PBS with 0.02% sodium azide and 50% glycerol pH 7.3.

Aliquoting is unnecessary for -20°C storage

For technical support and original validation data for this product please contact:

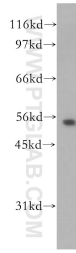
T: 4006900926

E: Proteintech-CN@ptglab.com

W: ptgcn.com

This product is exclusively available under Proteintech Group brand and is not available to purchase from any other manufacturer.

Selected Validation Data



human brain tissue were subjected to SDS PAGE followed by western blot with 12696-1-AP (Kir5.1 antibody) at dilution of 1:400 incubated at room temperature for 1.5 hours.