

For Research Use Only

# BHLHE41 Polyclonal antibody

Catalog Number: 12688-1-AP **11 Publications**



## Basic Information

<b>Catalog Number:</b> 12688-1-AP	<b>GenBank Accession Number:</b> BC025968	<b>Purification Method:</b> Antigen affinity purification
<b>Size:</b> 550 ug/ml	<b>GeneID (NCBI):</b> 79365	<b>Recommended Dilutions:</b> WB 1:1000-1:4000 IHC 1:2000-1:8000 IF/ICC 1:50-1:500
<b>Source:</b> Rabbit	<b>UNIPROT ID:</b> Q9C0J9	
<b>Isotype:</b> IgG	<b>Full Name:</b> basic helix-loop-helix family, member e41	
<b>Immunogen Catalog Number:</b> AG3381	<b>Calculated MW:</b> 482 aa, 51 kDa	
	<b>Observed MW:</b> 48-50 kDa	

## Applications

**Tested Applications:**  
WB, IHC, IF/ICC, ELISA

**Cited Applications:**  
WB, IHC, IF, IP, ChIP

**Species Specificity:**  
human, mouse, rat

**Cited Species:**  
human, mouse, rat

**Note-IHC: suggested antigen retrieval with TE buffer pH 9.0; (\*) Alternatively, antigen retrieval may be performed with citrate buffer pH 6.0**

**Positive Controls:**

WB : mouse testis tissue,

IHC : human ovary tumor tissue, mouse brain tissue, rat heart tissue

IF/ICC : A431 cells,

## Background Information

BHLHE41 (basic helix-loop-helix family member e41), also called SHARP1 and DEC2, is a member of the BHLH family proteins that are involved in differentiation, circadian rhythms and the response to hypoxia. In esophageal, osteosarcomas, prostate, breast, and endometrial cancer cells, BHLHE41 functions as an anti-apoptotic factor and promotes cell proliferation and invasiveness. It suppresses cell proliferation and metastasis, and also facilitates pancreatic as well as gastric cancer cell apoptosis. BHLHE41 has an important role in the proliferation of glioblastoma and could serve as a novel candidate for targeted therapy of glioblastoma (PMID: 31616182).

## Notable Publications

Author	Pubmed ID	Journal	Application
Tianpeng Zhang	30555544	Theranostics	IP
Xiao Yang	33990215	J Exp Clin Cancer Res	WB,IHC
Annette Schröder	31984552	FASEB J	WB

## Storage

**Storage:**

Store at -20°C. Stable for one year after shipment.

**Storage Buffer:**

PBS with 0.02% sodium azide and 50% glycerol pH 7.3.

Aliquoting is unnecessary for -20°C storage

For technical support and original validation data for this product please contact:

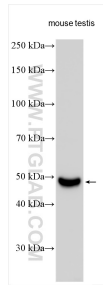
T: 4006900926

E: Proteintech-CN@ptglab.com

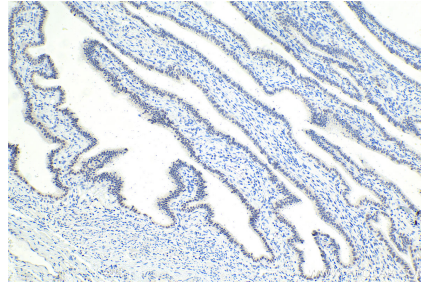
W: ptgcn.com

**This product is exclusively available under Proteintech Group brand and is not available to purchase from any other manufacturer.**

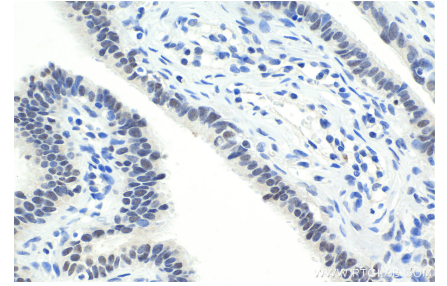
## Selected Validation Data



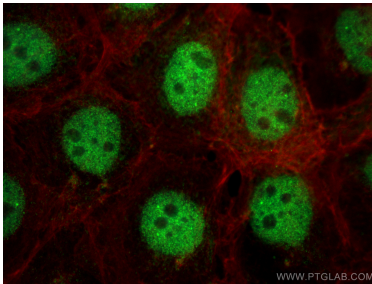
mouse testis tissue were subjected to SDS PAGE followed by western blot with 12688-1-AP (BHLHE41 antibody) at dilution of 1:2000 incubated at room temperature for 1.5 hours.



Immunohistochemical analysis of paraffin-embedded human ovary tumor tissue slide using 12688-1-AP (BHLHE41 antibody) at dilution of 1:4000 (under 10x lens). Heat mediated antigen retrieval with Tris-EDTA buffer (pH 9.0).



Immunohistochemical analysis of paraffin-embedded human ovary tumor tissue slide using 12688-1-AP (BHLHE41 antibody) at dilution of 1:4000 (under 40x lens). Heat mediated antigen retrieval with Tris-EDTA buffer (pH 9.0).



Immunofluorescent analysis of (4% PFA) fixed A431 cells using BHLHE41 antibody (12688-1-AP) at dilution of 1:200 and Multi-rAb Coralite® Plus 488-Goat Anti-Rabbit Recombinant Secondary Antibody (H+L) (RGAR002), CL594-Phalloidin (red).