

For Research Use Only

Protrudin Polyclonal antibody

Catalog Number: 12680-1-AP

Featured Product

14 Publications



Basic Information

Catalog Number:

12680-1-AP

Size:

1000 ug/ml

Source:

Rabbit

Isotype:

IgG

Immunogen Catalog Number:

AG3369

GenBank Accession Number:

BC030621

GeneID (NCBI):

118813

UNIPROT ID:

Q5T4F4

Full Name:

zinc finger, FYVE domain containing 27

Calculated MW:

411 aa, 46 kDa

Observed MW:

46-50 kDa

Purification Method:

Antigen affinity purification

Recommended Dilutions:

WB 1:500-1:1000

IHC 1:50-1:500

Applications

Tested Applications:

WB, IHC, ELISA

Cited Applications:

WB, IF, IP, ColP

Species Specificity:

human, mouse, rat

Cited Species:

human, mouse, rat, monkey

Note-IHC: suggested antigen retrieval with TE buffer pH 9.0; (*) Alternatively, antigen retrieval may be performed with citrate buffer pH 6.0

Positive Controls:

WB : mouse thymus tissue, mouse testis tissue, mouse brain tissue, Jurkat cells

IHC : human stomach cancer tissue,

Background Information

Protrudin, also named as ZFYVE27, is a 411 amino acid protein, which contains 1 FYVE-type zinc finger. Protrudin localizes in the recycling endosome membrane and functions as an upstream inhibitor of RAB11, regulating directional protein transport to the forming neurites. Protrudin is a key regulator of vesicular transport during neurite extension and is involved in neuronal intracellular trafficking in the corticospinal tract.

Notable Publications

Author	Pubmed ID	Journal	Application
James W Connell	31587092	Cell Mol Life Sci	
Xi Lu	31772151	Cell Death Dis	WB,IF,ColP
Veselina Petrova	33154382	Nat Commun	WB

Storage

Storage:

Store at -20°C. Stable for one year after shipment.

Storage Buffer:

PBS with 0.02% sodium azide and 50% glycerol pH 7.3.

Aliquoting is unnecessary for -20°C storage

For technical support and original validation data for this product please contact:

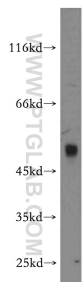
T: 4006900926

E: Proteintech-CN@ptglab.com

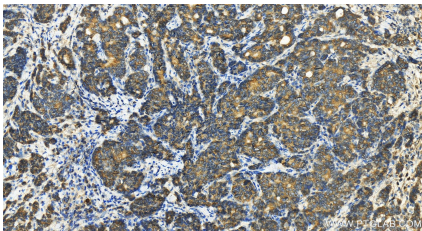
W: ptgcn.com

This product is exclusively available under Proteintech Group brand and is not available to purchase from any other manufacturer.

Selected Validation Data



mouse thymus tissue were subjected to SDS PAGE followed by western blot with 12680-1-AP (Protrudin antibody) at dilution of 1:500 incubated at room temperature for 1.5 hours.



Immunohistochemical analysis of paraffin-embedded stomach cancer slide using 12680-1-AP (Protrudin antibody) at dilution of 1:200 (under 20x lens). Heat mediated antigen retrieval with Tris-EDTA buffer (pH 9.0).