

For Research Use Only

# PPP2R5A Polyclonal antibody

Catalog Number: 12675-2-AP

Featured Product

4 Publications



## Basic Information

**Catalog Number:**

12675-2-AP

**Size:**

450 µg/ml

**Source:**

Rabbit

**Isotype:**

IgG

**Immunogen Catalog Number:**

AG3360

**GenBank Accession Number:**

BC022474

**GeneID (NCBI):**

5525

**UNIPROT ID:**

Q15172

**Full Name:**

protein phosphatase 2, regulatory subunit B', alpha isoform

**Calculated MW:**

486 aa, 56 kDa

**Observed MW:**

56 kDa

**Purification Method:**

Antigen affinity purification

**Recommended Dilutions:**

WB 1:300-1:1000

IP 0.5-4.0 µg for 1.0-3.0 mg of total protein lysate

IHC 1:50-1:500

IF 1:50-1:500

## Applications

**Tested Applications:**

IF/ICC, IHC, IP, WB, ELISA

**Cited Applications:**

WB, IHC

**Species Specificity:**

human, mouse, rat

**Cited Species:**

human, mouse

**Note-IHC: suggested antigen retrieval with TE buffer pH 9.0; (\*) Alternatively, antigen retrieval may be performed with citrate buffer pH 6.0**

**Positive Controls:**

**WB:** human ileum tissue, HeLa cells, human brain tissue, human heart tissue, human kidney tissue, human lung tissue, mouse heart tissue, rat heart tissue

**IP:** mouse brain tissue,

**IHC:** human pancreas cancer tissue,

**IF:** HepG2 cells,

## Background Information

PPP2R5A (protein phosphatase 2, regulatory subunit B (B56), alpha isoform) is also named as PR61alpha and belongs to the phosphatase 2A regulatory subunit B56 family. B56 alpha subunit gene encodes a cytoplasmic phosphoprotein (PMID:7592815). The B regulatory subunit might modulate substrate selectivity and catalytic activity, and also might direct the localization of the catalytic enzyme to a particular subcellular compartment. This protein has 2 isoforms produced by alternative splicing with the molecular weight of 54 kDa and 50 kDa.

## Notable Publications

| Author        | Pubmed ID | Journal        | Application |
|---------------|-----------|----------------|-------------|
| Xiaoman Zhu   | 36096985  | Cell Death Dis | WB          |
| Siwen Yin     | 35154432  | Oncol Lett     | WB          |
| Zehang Zhuang | 28849187  | Oncol Rep      | WB, IHC     |

## Storage

**Storage:**

Store at -20°C. Stable for one year after shipment.

**Storage Buffer:**

PBS with 0.02% sodium azide and 50% glycerol pH 7.3.

Aliquoting is unnecessary for -20°C storage

For technical support and original validation data for this product please contact:

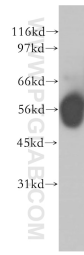
T: 4006900926

E: Proteintech-CN@ptglab.com

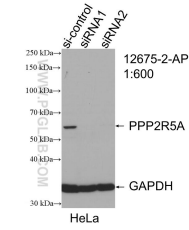
W: ptgcn.com

This product is exclusively available under Proteintech Group brand and is not available to purchase from any other manufacturer.

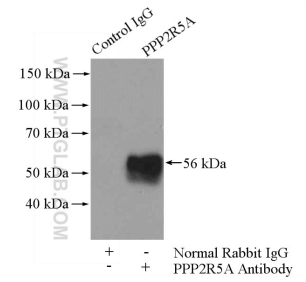
## Selected Validation Data



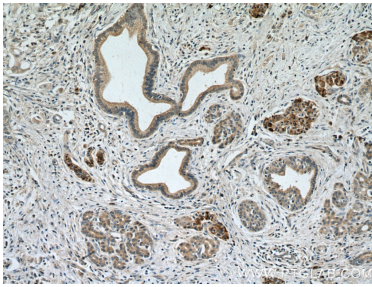
human ileum tissue were subjected to SDS PAGE followed by western blot with 12675-2-AP (PPP2R5A antibody) at dilution of 1:400 incubated at room temperature for 1.5 hours.



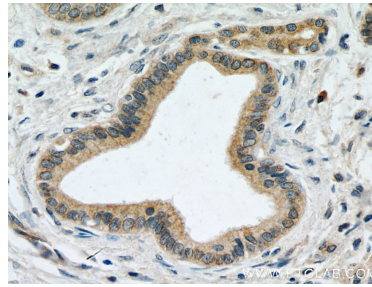
WB result of PPP2R5A antibody (12675-2-AP; 1:600; incubated at room temperature for 1.5 hours) with sh-Control and sh-PPP2R5A transfected HeLa cells.



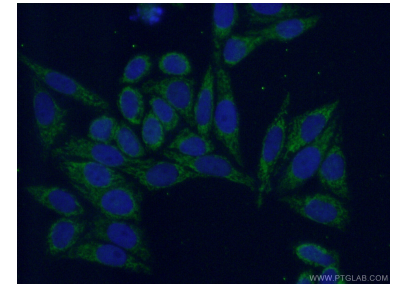
IP result of anti-PPP2R5A (IP:12675-2-AP, 4ug; Detection:12675-2-AP 1:500) with mouse brain tissue lysate 4000ug.



Immunohistochemical analysis of paraffin-embedded human pancreas cancer tissue slide using 12675-2-AP (PPP2R5A antibody) at dilution of 1:200 (under 10x lens. Heat mediated antigen retrieval with Tris-EDTA buffer (pH 9.0).



Immunohistochemical analysis of paraffin-embedded human pancreas cancer tissue slide using 12675-2-AP (PPP2R5A antibody) at dilution of 1:200 (under 40x lens. Heat mediated antigen retrieval with Tris-EDTA buffer (pH 9.0).



Immunofluorescent analysis of (4% PFA) fixed HepG2 cells using 12675-2-AP (PPP2R5A antibody) at dilution of 1:50 and Alexa Fluor 488-conjugated AffiniPure Goat Anti-Rabbit IgG(H+L).