

For Research Use Only

# SHCBP1 Polyclonal antibody

Catalog Number: 12672-1-AP

Featured Product

18 Publications



## Basic Information

Catalog Number:

12672-1-AP

Source:

Rabbit

Isotype:

IgG

Immunogen Catalog Number:

AG3355

GenBank Accession Number:

BC030699

GeneID (NCBI):

79801

UNIPROT ID:

Q8NEM2

Full Name:

SHC SH2-domain binding protein 1

Calculated MW:

672 aa, 76 kDa

Observed MW:

75-85 kDa

Purification Method:

Antigen affinity purification

Recommended Dilutions:

WB: 1:2000-1:10000

IP: 0.5-4.0 ug for 1.0-3.0 mg of total protein lysate

IHC: 1:50-1:500

## Applications

Tested Applications:

WB, IP, IHC, ELISA

Cited Applications:

WB, IHC, IF, IP, CoIP

Species Specificity:

human, mouse

Cited Species:

human, mouse, canine

**Note-IHC: suggested antigen retrieval with TE buffer pH 9.0; (\*) Alternatively, antigen retrieval may be performed with citrate buffer pH 6.0**

Positive Controls:

**WB**: HeLa cells, Jurkat cells, Sp2/0 cells, Neuro-2a cells, HepG2 cells, mouse thymus tissue

**IP**: Jurkat cells,

**IHC**: human liver cancer tissue, human tonsillitis tissue, human testis tissue

## Background Information

SHCBP1 was initially identified as a potential gene associated with cell proliferation in fibroblasts. SHCBP1 exerts a crucial physiological function in normal tissue development. Chen et al. showed that SHCBP1 is an essential component of FGF signaling in neural progenitor cells. SHCBP1 is also upregulated during T cell proliferation and regulates CD4<sup>+</sup> T cell effector function in vivo. Recently, SHCBP1 was shown to be closely associated with cancer development.

## Notable Publications

Author	Pubmed ID	Journal	Application
Hongzhao Lu	33064958	Cancer Biol Ther	WB
Changliang Peng	29020987	J Exp Clin Cancer Res	IF, IHC, WB
Miao Mo	33163262	Am J Cancer Res	WB, IHC

## Storage

Storage:

Store at -20°C. Stable for one year after shipment.

Storage Buffer:

PBS with 0.02% sodium azide and 50% glycerol, pH7.3

Aliquoting is unnecessary for -20°C storage

For technical support and original validation data for this product please contact:

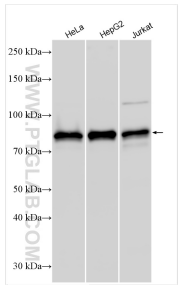
T: 4006900926

E: [Proteintech-CN@ptglab.com](mailto:Proteintech-CN@ptglab.com)

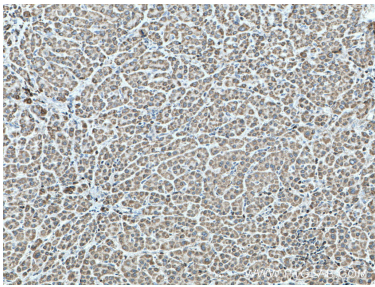
W: [ptgcn.com](http://ptgcn.com)

**This product is exclusively available under Proteintech Group brand and is not available to purchase from any other manufacturer.**

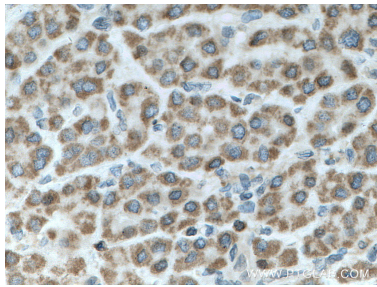
Selected Validation Data



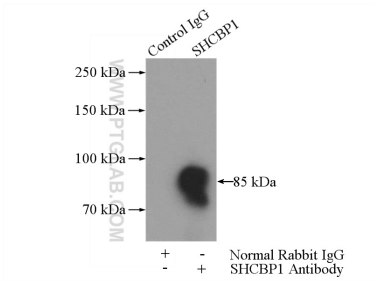
Various lysates were subjected to SDS PAGE followed by western blot with 12672-1-AP (SHCBP1 antibody) at dilution of 1:5000 incubated at room temperature for 1.5 hours.



Immunohistochemical analysis of paraffin-embedded human liver cancer tissue slide using 12672-1-AP (SHCBP1 antibody) at dilution of 1:200 (under 10x lens. Heat mediated antigen retrieval with Tris-EDTA buffer (pH 9.0).



Immunohistochemical analysis of paraffin-embedded human liver cancer tissue slide using 12672-1-AP (SHCBP1 antibody) at dilution of 1:200 (under 40x lens. Heat mediated antigen retrieval with Tris-EDTA buffer (pH 9.0).



IP result of anti-SHCBP1 (IP:12672-1-AP, 4ug; Detection:12672-1-AP 1:500) with Jurkat cells lysate 2400ug.