

For Research Use Only

# CaMKII Gamma Polyclonal antibody, PBS Only

Catalog Number: 12666-2-PBS

Featured Product



## Basic Information

Catalog Number:

12666-2-PBS

Size:

1 mg/ml

Source:

Rabbit

Isotype:

IgG

Immunogen Catalog Number:

AG3348

GenBank Accession Number:

BC034044

GeneID (NCBI):

818

UNIPROT ID:

Q13555

Full Name:

calcium/calmodulin-dependent  
protein kinase II gamma

Calculated MW:

527 aa, 59 kDa

Observed MW:

59 kDa

Purification Method:

Antigen affinity purification

## Applications

Tested Applications:

WB, IHC, IF/ICC, IP, Indirect ELISA

Species Specificity:

human, mouse, rat

## Background Information

CaMKII gamma, also named CAMKG or CAMK2G, belongs to the protein kinase superfamily, CAMK Ser/Thr protein kinase family, and CaMK subfamily. CAMK2 is a prominent kinase in the central nervous system that may function in long-term potentiation and neurotransmitter release. CAMK2G is expressed in human beta cells as a candidate gene for Type II (non-insulin-dependent) diabetes mellitus. Some studies can be used to assess the role of CAMK2G in the susceptibility to Type II diabetes (PMID: 12032636). CAMK2G has some isoforms with the MW of 55-66 kDa and this antibody can recognize all the isoforms of CAMK2G. This antibody may have cross-reaction with CAMK2A/B/D due to the high homology.

## Storage

Storage:

Store at -80°C.

The product is shipped with ice packs. Upon receipt, store it immediately at -80°C

Storage Buffer:

PBS Only

For technical support and original validation data for this product please contact:

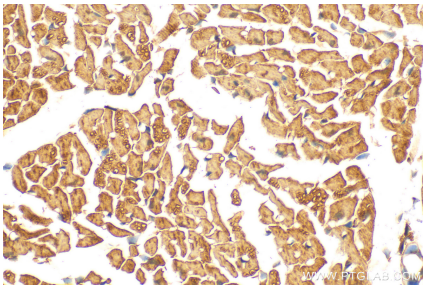
T: 4006900926

E: [Proteintech-CN@ptglab.com](mailto:Proteintech-CN@ptglab.com)

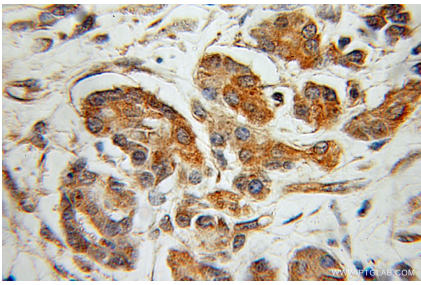
W: [ptgcn.com](http://ptgcn.com)

This product is exclusively available under Proteintech Group brand and is not available to purchase from any other manufacturer.

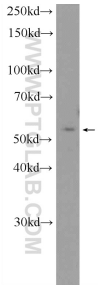
Selected Validation Data



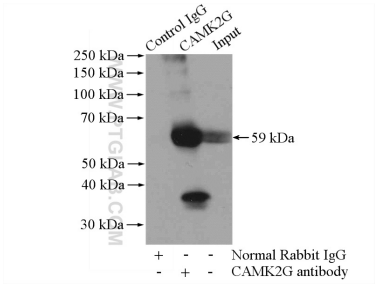
Immunohistochemical analysis of paraffin-embedded mouse heart tissue slide using 12666-2-AP (CaMKII Gamma antibody) at dilution of 1:200 (under 40x lens). Heat mediated antigen retrieval with Tris-EDTA buffer (pH 9.0). This data was developed using the same antibody clone with 12666-2-PBS in a different storage buffer formulation.



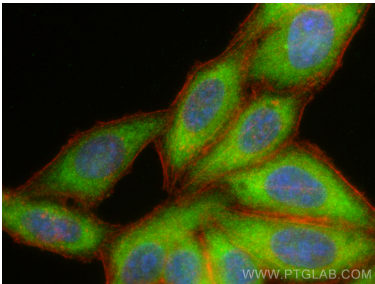
Immunohistochemical analysis of paraffin-embedded human pancreas cancer using 12666-2-AP (CaMKII gamma antibody) at dilution of 1:100 (under 10x lens). This data was developed using the same antibody clone with 12666-2-PBS in a different storage buffer formulation.



SMMC-7721 cells were subjected to SDS PAGE followed by western blot with 12666-2-AP (CaMKII gamma antibody) at dilution of 1:2000 incubated at room temperature for 1.5 hours. This data was developed using the same antibody clone with 12666-2-PBS in a different storage buffer formulation.



IP result of anti-CaMKII Gamma (IP:12666-2-AP, 4ug; Detection:12666-2-AP 1:1000) with mouse heart tissue lysate 3200ug. This data was developed using the same antibody clone with 12666-2-PBS in a different storage buffer formulation.



Immunofluorescent analysis of (-20°C Ethanol) fixed HepG2 cells using CaMKII Gamma antibody (12666-2-AP) at dilution of 1:400 and Multi-rAb CoraLite ® Plus 488-Goat Anti-Rabbit Recombinant Secondary Antibody (H+L) (RGAR002), CL594-phalloidin (red). This data was developed using the same antibody clone with 12666-2-PBS in a different storage buffer formulation.