

For Research Use Only

DBP Polyclonal antibody

Catalog Number: 12662-1-AP

Featured Product

10 Publications



Basic Information

Catalog Number:

12662-1-AP

Size:

900 µg/ml

Source:

Rabbit

Isotype:

IgG

Immunogen Catalog Number:

AG3343

GenBank Accession Number:

BC011965

GeneID (NCBI):

1628

UNIPROT ID:

Q10586

Full Name:

D site of albumin promoter (albumin D-box) binding protein

Calculated MW:

325 aa, 34 kDa

Observed MW:

34 kDa

Purification Method:

Antigen affinity purification

Recommended Dilutions:

WB 1:500-1:1000

IHC 1:50-1:500

Applications

Tested Applications:

WB, IHC, ELISA

Cited Applications:

WB, IHC, IF

Species Specificity:

human, mouse, rat

Cited Species:

human, mouse, rat, chicken

Positive Controls:

WB : SH-SY5Y cells,

IHC : mouse brain tissue,

Note-IHC: suggested antigen retrieval with TE buffer pH 9.0; (*) Alternatively, antigen retrieval may be performed with citrate buffer pH 6.0

Background Information

Notable Publications

Author	Pubmed ID	Journal	Application
Saya Ito	34162983	Sci Rep	WB,IHC
Huilin Li	35902736	Commun Biol	WB
Shuai Wang	35198059	Theranostics	WB

Storage

Storage:

Store at -20°C. Stable for one year after shipment.

Storage Buffer:

PBS with 0.02% sodium azide and 50% glycerol pH 7.3.

Aliquoting is unnecessary for -20°C storage

For technical support and original validation data for this product please contact:

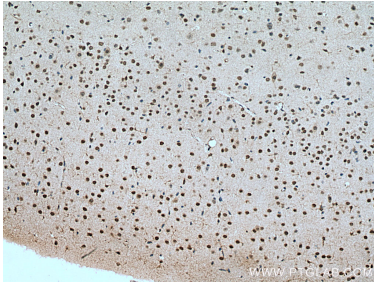
T: 4006900926

E: Proteintech-CN@ptglab.com

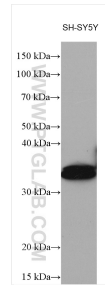
W: ptgcn.com

This product is exclusively available under Proteintech Group brand and is not available to purchase from any other manufacturer.

Selected Validation Data



Immunohistochemical analysis of paraffin-embedded mouse brain tissue slide using 12662-1-AP (DBP antibody) at dilution of 1:200 (under 10x lens). Heat mediated antigen retrieval with Tris-EDTA buffer (pH 9.0).



SH-SY5Y cells lysates were subjected to SDS PAGE followed by western blot with 12662-1-AP (DBP antibody) at dilution of 1:500 incubated at room temperature for 1.5 hours.