

For Research Use Only

I κ B Beta Polyclonal antibody, PBS Only

Catalog Number:12660-1-PBS



Basic Information

Catalog Number:

12660-1-PBS

Source:

Rabbit

Isotype:

IgG

Immunogen Catalog Number:

AG3340

GenBank Accession Number:

BC015528

GeneID (NCBI):

4793

UNIPROT ID:

Q15653

Full Name:

nuclear factor of kappa light polypeptide gene enhancer in B-cells inhibitor, beta

Calculated MW:

356 aa, 38 kDa

Observed MW:

46 kDa

Purification Method:

Antigen affinity purification

Applications

Tested Applications:

WB, IHC, IF/ICC, Indirect ELISA

Species Specificity:

human

Background Information

Storage

Storage:

Store at -80°C.

The product is shipped with ice packs. Upon receipt, store it immediately at -80°C

Storage Buffer:

PBS only, pH7.3

For technical support and original validation data for this product please contact:

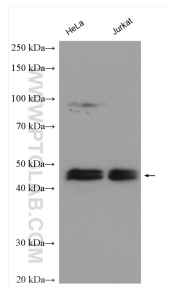
T: 4006900926

E: Proteintech-CN@ptglab.com

W: ptgcn.com

This product is exclusively available under Proteintech Group brand and is not available to purchase from any other manufacturer.

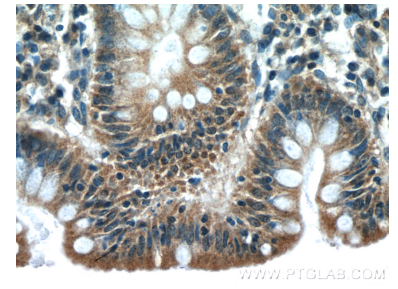
Selected Validation Data



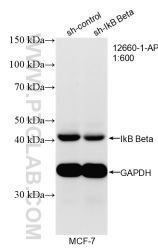
Various lysates were subjected to SDS PAGE followed by western blot with 12660-1-AP (IκB beta antibody) at dilution of 1:1000 incubated at room temperature for 1.5 hours. This data was developed using the same antibody clone with 12660-1-PBS in a different storage buffer formulation.



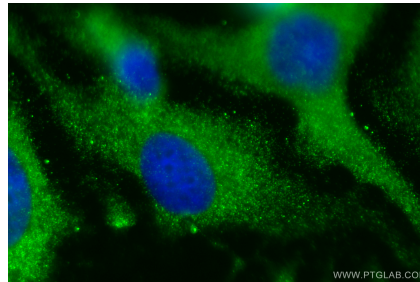
Immunohistochemical analysis of paraffin-embedded human colon tissue slide using 12660-1-AP (IκB beta antibody at dilution of 1:200 (under 10x lens). This data was developed using the same antibody clone with 12660-1-PBS in a different storage buffer formulation.



Immunohistochemical analysis of paraffin-embedded human colon tissue slide using 12660-1-AP (IκB beta antibody at dilution of 1:200 (under 40x lens). This data was developed using the same antibody clone with 12660-1-PBS in a different storage buffer formulation.



WB result of IκB Beta antibody (12660-1-AP; 1:600; incubated at room temperature for 1.5 hours) with sh-Control and sh-IκB Beta transfected MCF-7 cells. This data was developed using the same antibody clone with 12660-1-PBS in a different storage buffer formulation.



Immunofluorescent analysis of (-20°C Ethanol) fixed HeLa cells using IκB Beta antibody (12660-1-AP) at dilution of 1:400 and Coralite® 488-Conjugated AffiniPure Goat Anti-Rabbit IgG(H+L) (SA00013-2). This data was developed using the same antibody clone with 12660-1-PBS in a different storage buffer formulation.