

# GPR155 Polyclonal antibody

Catalog Number: 12659-1-AP

1 Publications

## Basic Information

**Catalog Number:**

12659-1-AP

**Size:**

650 µg/ml

**Source:**

Rabbit

**Isotype:**

IgG

**Immunogen Catalog Number:**

AG3328

**GenBank Accession Number:**

BC028730

**GeneID (NCBI):**

151556

**UNIPROT ID:**

Q7Z3F1

**Full Name:**

G protein-coupled receptor 155

**Calculated MW:**

870 aa, 97 kDa

**Observed MW:**

97 kDa, 75 kDa

**Purification Method:**

Antigen affinity purification

**Recommended Dilutions:**

WB 1:200-1:1000

IP 0.5-4.0 µg for 1.0-3.0 mg of total protein lysate

IHC 1:50-1:500

## Applications

**Tested Applications:**

IHC, IP, WB, ELISA

**Cited Applications:**

WB, IHC

**Species Specificity:**

human, mouse

**Cited Species:**

human, mouse

**Note-IHC: suggested antigen retrieval with TE buffer pH 9.0; (\*) Alternatively, antigen retrieval may be performed with citrate buffer pH 6.0**

**Positive Controls:**

WB : mouse brain tissue,

IP : mouse brain tissue,

IHC : human brain tissue, mouse brain tissue

## Background Information

The G Protein-coupled receptor 155 (GPR155), also known as Lysosomal cholesterol signaling protein (LYCHOS), is a cholesterol receptor on the lysosome. GPR155 plays a role in the cholesterol-sensing lysosomal pathway and couples cholesterol concentration to MTORC1-dependent anabolic signaling (PMID: 36007018). GPR155 may represent a biomarker for diagnosing and predicting hematogenous metastasis of gastric cancer (PMID: 28165032).

## Notable Publications

Author	Pubmed ID	Journal	Application
Li Liu	38678850	Pathol Res Pract	WB, IHC

## Storage

**Storage:**

Store at -20°C. Stable for one year after shipment.

**Storage Buffer:**

PBS with 0.02% sodium azide and 50% glycerol pH 7.3.

Aliquoting is unnecessary for -20°C storage

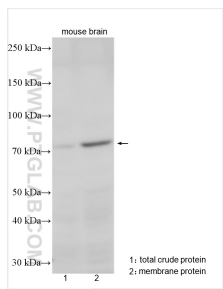
For technical support and original validation data for this product please contact:

T: 4006900926

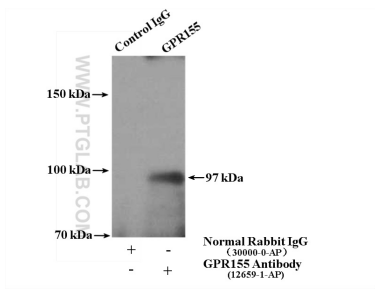
E: [Proteintech-CN@ptglab.com](mailto:Proteintech-CN@ptglab.com)W: [ptgcn.com](http://ptgcn.com)

This product is exclusively available under Proteintech Group brand and is not available to purchase from any other manufacturer.

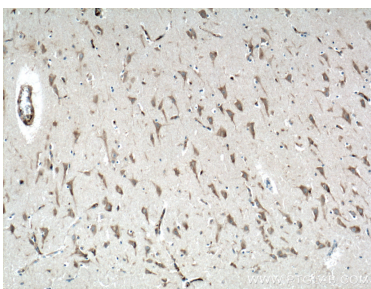
## Selected Validation Data



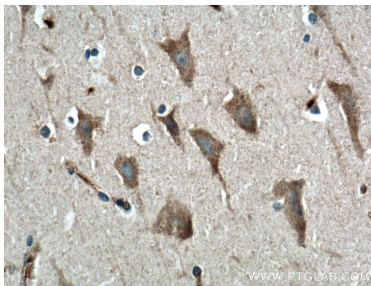
mouse brain lysates were subjected to SDS PAGE followed by western blot with 12659-1-AP (GPR155 antibody) at dilution of 1:300 incubated at room temperature for 1.5 hours.



IP result of anti-GPR155 (IP:12659-1-AP, 4ug; Detection:12659-1-AP 1:300) with mouse brain tissue lysate 3000ug.



Immunohistochemical analysis of paraffin-embedded human brain tissue slide using 12659-1-AP (GPR155 Antibody) at dilution of 1:100 (under 10x lens). Heat mediated antigen retrieval with Tris-EDTA buffer (pH 9.0).



Immunohistochemical analysis of paraffin-embedded human brain tissue slide using 12659-1-AP (GPR155 Antibody) at dilution of 1:100 (under 40x lens). Heat mediated antigen retrieval with Tris-EDTA buffer (pH 9.0).