

For Research Use Only

# TMEM16A/DOG1 Polyclonal antibody

Catalog Number: 12652-1-AP

Featured Product

10 Publications



## Basic Information

Catalog Number:

12652-1-AP

Concentration:

450 ug/ml

Source:

Rabbit

Isotype:

IgG

Immunogen Catalog Number:

AG3320

GenBank Accession Number:

BC027590

GeneID (NCBI):

55107

UNIPROT ID:

Q5XXA6

Full Name:

anoctamin 1, calcium activated chloride channel

Calculated MW:

986 aa, 114 kDa

Observed MW:

114 kDa

Purification Method:

Antigen affinity purification

Recommended Dilutions:

IHC: 1:250-1:1000

IF-P: 1:50-1:500

## Applications

Tested Applications:

IHC, IF-P, ELISA

Cited Applications:

IHC, IF, IP

Species Specificity:

human, mouse

Cited Species:

human, mouse, rat

**Note-IHC: suggested antigen retrieval with TE buffer pH 9.0; (\*) Alternatively, antigen retrieval may be performed with citrate buffer pH 6.0**

Positive Controls:

IHC : human stomach cancer tissue,

IF-P : human lung cancer tissue,

## Background Information

ANO1 also named as DOG1, ORAOV2, TAOS2 and TMEM16A, acts as a calcium-activated chloride channel. It is required for normal tracheal development. ANO1 (or DOG1) is used as an aid in the identification and diagnosis of gastrointestinal stromal tumors (GIST) within the context of an antibody panel, the patient's clinical history, and other diagnostic tests evaluated by a qualified pathologist. The immunogen is the C-terminal of ANO1. This antibody can recognize isoform1 and isoform2 of human ANO1.

## Notable Publications

Author	Pubmed ID	Journal	Application
Dominika A Bijos	25181534	PLoS One	IF
Jingru Sui	32472021	Cell Death Dis	
Yumi Harada	34246954	Biomed Pharmacother	IHC

## Storage

Storage:

Store at -20°C. Stable for one year after shipment.

Storage Buffer:

PBS with 0.02% sodium azide and 50% glycerol, pH7.3

Aliquoting is unnecessary for -20°C storage

For technical support and original validation data for this product please contact:

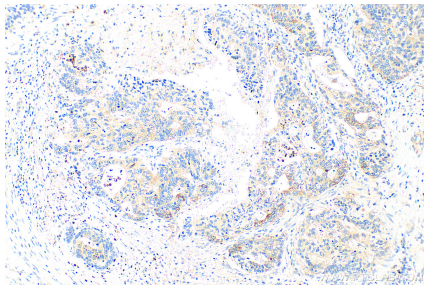
T: 4006900926

E: [Proteintech-CN@ptglab.com](mailto:Proteintech-CN@ptglab.com)

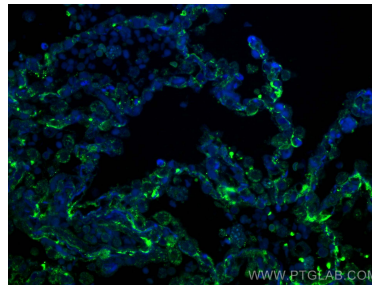
W: [ptgcn.com](http://ptgcn.com)

This product is exclusively available under Proteintech Group brand and is not available to purchase from any other manufacturer.

## Selected Validation Data



Immunohistochemical analysis of paraffin-embedded human stomach cancer tissue slide using 12652-1-AP (TMEM16A/DOG1 antibody) at dilution of 1:500 (under 10x lens). Heat mediated antigen retrieval with Tris-EDTA buffer (pH 9.0).



Immunofluorescent analysis of (4% PFA) fixed human lung cancer tissue using TMEM16A/DOG1 antibody (12652-1-AP) at dilution of 1:200 and CoraLite®488-Conjugated AffiniPure Goat Anti-Rabbit IgG(H+L).