

PDIK1L Polyclonal antibody

Catalog Number: 12646-1-AP

Basic Information

Catalog Number:

12646-1-AP

Size:

750 µg/ml

Source:

Rabbit

Isotype:

IgG

Immunogen Catalog Number:

AG3356

GenBank Accession Number:

BC028713

GeneID (NCBI):

149420

UNIPROT ID:

Q8N165

Full Name:

PDLIM1 interacting kinase 1 like

Calculated MW:

341 aa, 39 kDa

Observed MW:

39 kDa

Purification Method:

Antigen affinity purification

Recommended Dilutions:

WB 1:1000-1:4000

Applications

Tested Applications:

WB, ELISA

Species Specificity:

mouse, rat

Positive Controls:

WB : rat spleen tissue, mouse spleen tissue

Background Information

PDIK1L, also known as CLK1L, belongs to the protein kinase superfamily and Ser/Thr protein kinase family. PDIK1L is a protein kinase associated with CLP-36-interacting kinase and is widely expressed in many organs and tissues. PDIK1L also expresses in endometriotic cells abundantly and stromal fibroblast moderately, and this protein would be released into the abdominal cavity during menstruation cycles and could elicit an auto-antibody reaction (PMID: 20403595, PMID: 33722753).

Storage

Storage:

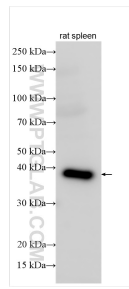
Store at -20°C. Stable for one year after shipment.

Storage Buffer:

PBS with 0.02% sodium azide and 50% glycerol pH 7.3.

Aliquoting is unnecessary for -20°C storage

Selected Validation Data



rat spleen tissue were subjected to SDS PAGE followed by western blot with 12646-1-AP (PDIK1L antibody) at dilution of 1:2000 incubated at room temperature for 1.5 hours.