

# WDR16 Polyclonal antibody

Catalog Number: 12644-1-AP

## Basic Information

Catalog Number:	12644-1-AP	GenBank Accession Number:	BC025392	Purification Method:	Antigen affinity purification
Size:	200 µg/ml	GeneID (NCBI):	146845	Recommended Dilutions:	IHC 1:20-1:200
Source:	Rabbit	UNIPROT ID:	Q8N1V2		IF/ICC 1:50-1:500
Isotype:	IgG	Full Name:	WD repeat domain 16		
Immunogen Catalog Number:	AG3281	Calculated MW:	620 aa, 68 kDa		

## Applications

Tested Applications:	IHC, IF/ICC, ELISA	Positive Controls:	
Species Specificity:	human	IHC :	human testis tissue, human liver cancer tissue
		IF/ICC :	HeLa cells,

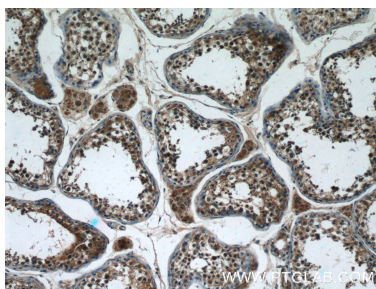
**Note-IHC:** suggested antigen retrieval with **TE buffer pH 9.0; (\*) Alternatively, antigen retrieval may be performed with citrate buffer pH 6.0**

## Background Information

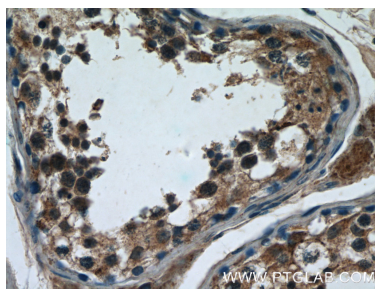
### Storage

Storage:  
Store at -20°C. Stable for one year after shipment.  
Storage Buffer:  
PBS with 0.02% sodium azide and 50% glycerol pH 7.3.  
Aliquoting is unnecessary for -20°C storage

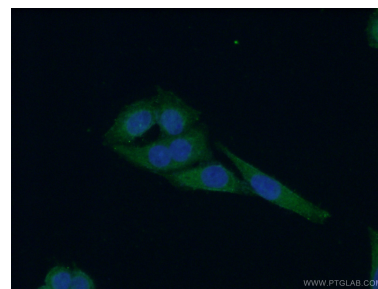
## Selected Validation Data



Immunohistochemical analysis of paraffin-embedded human testis tissue slide using 12644-1-AP (WDR16 Antibody) at dilution of 1:50 (under 10x lens).



Immunohistochemical analysis of paraffin-embedded human testis tissue slide using 12644-1-AP (WDR16 Antibody) at dilution of 1:50 (under 40x lens).



Immunofluorescent analysis of (-20°C Ethanol) fixed HeLa cells using 12644-1-AP (WDR16 antibody) at dilution of 1:50 and Alexa Fluor 488-conjugated AffiniPure Goat Anti-Rabbit IgG(H+L).