

For Research Use Only

# SHC4 Polyclonal antibody

Catalog Number: 12641-1-AP

Featured Product

3 Publications



## Basic Information

Catalog Number:

12641-1-AP

Size:

600 µg/ml

Source:

Rabbit

Isotype:

IgG

Immunogen Catalog Number:

AG3336

GenBank Accession Number:

BC033907

GeneID (NCBI):

399694

UNIPROT ID:

Q6S5L8

Full Name:

SHC (Src homology 2 domain containing) family, member 4

Calculated MW:

630 aa, 69 kDa

Observed MW:

69 kDa

Purification Method:

Antigen affinity purification

Recommended Dilutions:

WB 1:500-1:3000

IHC 1:50-1:500

IF/ICC 1:200-1:800

## Applications

Tested Applications:

WB, IHC, IF/ICC, ELISA

Cited Applications:

WB, IHC, CoIP, IF

Species Specificity:

human, mouse, rat

Cited Species:

human, mouse

**Note-IHC: suggested antigen retrieval with TE buffer pH 9.0; (\*) Alternatively, antigen retrieval may be performed with citrate buffer pH 6.0**

Positive Controls:

**WB** : SH-SY5Y cells, human brain tissue, HepG2 cells, human skeletal muscle tissue, mouse brain tissue, A375 cells, rat brain tissue

**IHC** : rat brain tissue, mouse brain tissue

**IF/ICC** : HepG2 cells, SH-SY5Y cells

## Background Information

### Notable Publications

Author	Pubmed ID	Journal	Application
Liu Wanting W	23638386	PeerJ	IHC,IF
Zhiling Luo	31971563	Clin Sci (Lond)	WB
Wenjing Zhong	38052369	Cancer Lett	WB,IHC,IF,CoIP

## Storage

Storage:

Store at -20°C. Stable for one year after shipment.

Storage Buffer:

PBS with 0.02% sodium azide and 50% glycerol pH 7.3.

Aliquoting is unnecessary for -20°C storage

For technical support and original validation data for this product please contact:

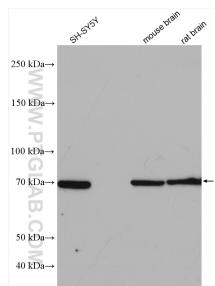
T: 4006900926

E: [Proteintech-CN@ptglab.com](mailto:Proteintech-CN@ptglab.com)

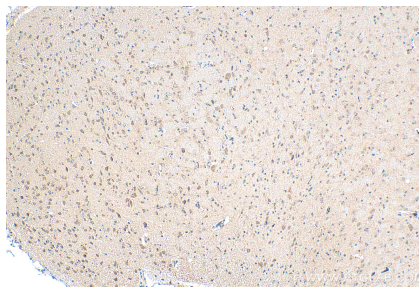
W: [ptgcn.com](http://ptgcn.com)

**This product is exclusively available under Proteintech Group brand and is not available to purchase from any other manufacturer.**

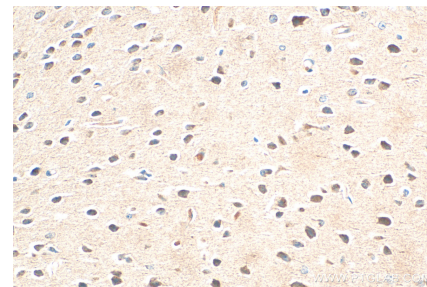
## Selected Validation Data



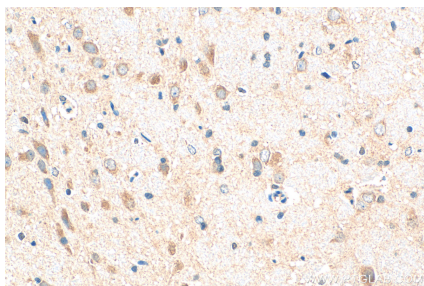
Various lysates were subjected to SDS PAGE followed by western blot with 12641-1-AP (SHC4 antibody) at dilution of 1:1500 incubated at room temperature for 1.5 hours.



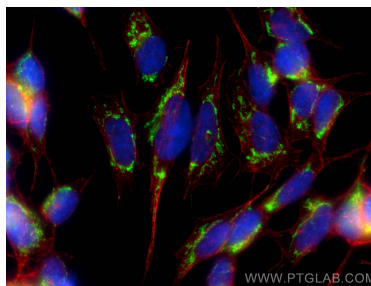
Immunohistochemical analysis of paraffin-embedded rat brain tissue slide using 12641-1-AP (SHC4 antibody) at dilution of 1:200 (under 10x lens). Heat mediated antigen retrieval with Tris-EDTA buffer (pH 9.0).



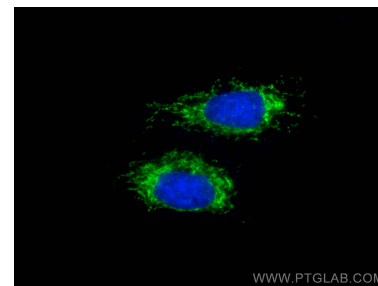
Immunohistochemical analysis of paraffin-embedded mouse brain tissue slide using 12641-1-AP (SHC4 antibody) at dilution of 1:200 (under 40x lens). Heat mediated antigen retrieval with Tris-EDTA buffer (pH 9.0).



Immunohistochemical analysis of paraffin-embedded rat brain tissue slide using 12641-1-AP (SHC4 antibody) at dilution of 1:200 (under 40x lens). Heat mediated antigen retrieval with Tris-EDTA buffer (pH 9.0).



Immunofluorescent analysis of (-20°C Ethanol) fixed SH-SY5Y cells using SHC4 antibody (12641-1-AP) at dilution of 1:400 and CoraLite®488-Conjugated AffiniPure Goat Anti-Rabbit IgG(H+L) (SA00013-2), CL594-Phalloidin (red).



Immunofluorescent analysis of (-20°C Ethanol) fixed HepG2 cells using SHC4 antibody (12641-1-AP) at dilution of 1:400 and CoraLite®488-Conjugated AffiniPure Goat Anti-Rabbit IgG(H+L) (SA00013-2).