

For Research Use Only

CCT6B Polyclonal antibody

Catalog Number: 12628-1-AP

1 Publications



Basic Information

Catalog Number:

12628-1-AP

Size:

310 µg/ml

Source:

Rabbit

Isotype:

IgG

Immunogen Catalog Number:

AG3321

GenBank Accession Number:

BC027591

GeneID (NCBI):

10693

UNIPROT ID:

Q92526

Full Name:

chaperonin containing TCP1, subunit 6B (zeta 2)

Calculated MW:

530 aa, 58 kDa

Observed MW:

58 kDa

Purification Method:

Antigen affinity purification

Recommended Dilutions:

WB 1:500-1:2000

Applications

Tested Applications:

WB, ELISA

Cited Applications:

WB

Species Specificity:

human, mouse, rat

Cited Species:

human

Positive Controls:

WB : mouse ovary tissue,

Background Information

CCT6B, also named as CCT-zeta-2, TCP-1-zeta-like, CCT-zeta-like, testis-specific Tcp20 and testis-specific protein TSA303, belongs to the TCP-1 chaperonin family. CCT6B is a molecular chaperone which assists the folding of proteins upon ATP hydrolysis. It is known to play a role in vitro, in the folding of actin and tubulin. This antibody can recognize both of CCT6A and CCT6B.

Notable Publications

Author	Pubmed ID	Journal	Application
Yamabe K K	20331799	Mol Oral Microbiol	WB

Storage

Storage:

Store at -20°C. Stable for one year after shipment.

Storage Buffer:

PBS with 0.02% sodium azide and 50% glycerol pH 7.3.

Aliquoting is unnecessary for -20°C storage

For technical support and original validation data for this product please contact:

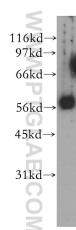
T: 4006900926

E: Proteintech-CN@ptglab.com

W: ptgcn.com

This product is exclusively available under Proteintech Group brand and is not available to purchase from any other manufacturer.

Selected Validation Data



mouse ovary tissue were subjected to SDS PAGE followed by western blot with 12628-1-AP (CCT6B antibody) at dilution of 1:500 incubated at room temperature for 1.5 hours.