

RBBP8 Polyclonal antibody

Catalog Number: 12624-1-AP

Featured Product

4 Publications

Basic Information

Catalog Number:

12624-1-AP

Size:

260 µg/ml

Source:

Rabbit

Isotype:

IgG

Immunogen Catalog Number:

AG3314

GenBank Accession Number:

BC030590

GeneID (NCBI):

5932

UNIPROT ID:

Q99708

Full Name:

retinoblastoma binding protein 8

Calculated MW:

103 kDa

Observed MW:

120 kDa

Purification Method:

Antigen affinity purification

Recommended Dilutions:

WB 1:500-1:1000

Applications

Tested Applications:

WB, ELISA

Cited Applications:

WB

Species Specificity:

human, mouse

Cited Species:

human

Positive Controls:

WB : Raji cells, A431 cells

Background Information

RBBP8 is an endonuclease that cooperates with the MRE11-RAD50-NBN (MRN) complex in processing meiotic and mitotic double-strand breaks (DSBs) by ensuring both resection and intrachromosomal association of the broken ends. It functions downstream of the MRN complex and ATM, promotes ATR activation and its recruitment to DSBs in the S/G2 phase facilitating the generation of ssDNA. It interacted with BRCA1 to form a complex that regulates CHEK1 activation and controls cell cycle G2/M checkpoints on DNA damage. Also it promotes microhomology-mediated alternative end joining (A-NHEJ) during class-switch recombination and plays an essential role in chromosomal translocations

Notable Publications

Author	Pubmed ID	Journal	Application
Yang Yu	31636387	Oncogene	WB
Lei Yang	31418900	Cell Biochem Funct	WB
Qunsong Tan	38657865	J Biol Chem	WB

Storage

Storage:

Store at -20°C. Stable for one year after shipment.

Storage Buffer:

PBS with 0.02% sodium azide and 50% glycerol pH 7.3.

Aliquoting is unnecessary for -20°C storage

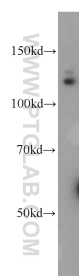
For technical support and original validation data for this product please contact:

T: 4006900926

E: Proteintech-CN@ptglab.comW: ptgcn.com

This product is exclusively available under Proteintech Group brand and is not available to purchase from any other manufacturer.

Selected Validation Data



Raji cells were subjected to SDS PAGE followed by western blot with 12624-1-AP (RBBP8 antibody) at dilution of 1:600 incubated at room temperature for 1.5 hours.