

For Research Use Only

RFX2 Polyclonal antibody, PBS Only

Catalog Number:12622-1-PBS



Basic Information

Catalog Number:

12622-1-PBS

Concentration:

1 mg/ml

Source:

Rabbit

Isotype:

IgG

Immunogen Catalog Number:

AG3310

GenBank Accession Number:

BC028579

GeneID (NCBI):

5990

UNIPROT ID:

P48378

Full Name:

regulatory factor X, 2 (influences HLA class II expression)

Calculated MW:

723 aa, 80 kDa

Observed MW:

80 kDa

Purification Method:

Antigen affinity purification

Applications

Tested Applications:

WB, IHC, IP, Indirect ELISA

Species Specificity:

human, mouse, rat

Background Information

RFX2 is a key regulator of ciliogenesis in vertebrates, and knockdown of Rfx2 causes defects in neural tube closure and in left-right axis patterning (PMID: 26248850). RFX2 expression is greatly enhanced in adult testis and that RFX2 is equally prominent in highly enriched populations of late pachytene spermatocytes and round spermatids (PMID: 22227339). RFX2 is also required for the development of left-right asymmetry, and motile cilia on RFX2-expressing cells are sufficient to establish adequate fluid flow across the COA to direct normal LR development in mouse (PMID: 22233545).

Storage

Storage:

Store at -80°C.

The product is shipped with ice packs. Upon receipt, store it immediately at -80°C

Storage Buffer:

PBS only, pH7.3

For technical support and original validation data for this product please contact:

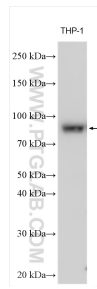
T: 4006900926

E: Proteintech-CN@ptglab.com

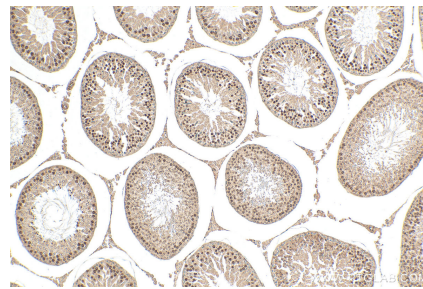
W: ptgcn.com

This product is exclusively available under Proteintech Group brand and is not available to purchase from any other manufacturer.

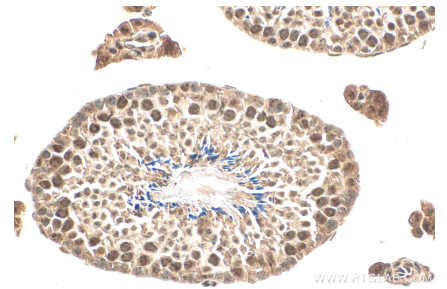
Selected Validation Data



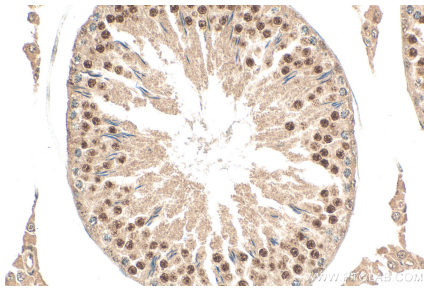
Various lysates were subjected to SDS PAGE followed by western blot with 12622-1-AP (RFX2 antibody) at dilution of 1:3000 incubated at room temperature for 1.5 hours. This data was developed using the same antibody clone with 12622-1-PBS in a different storage buffer formulation.



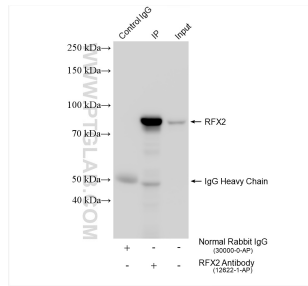
Immunohistochemical analysis of paraffin-embedded rat testis tissue slide using 12622-1-AP (RFX2 antibody) at dilution of 1:200 (under 10x lens). Heat mediated antigen retrieval with Tris-EDTA buffer (pH 9.0). This data was developed using the same antibody clone with 12622-1-PBS in a different storage buffer formulation.



Immunohistochemical analysis of paraffin-embedded mouse testis tissue slide using 12622-1-AP (RFX2 antibody) at dilution of 1:200 (under 40x lens). Heat mediated antigen retrieval with Tris-EDTA buffer (pH 9.0). This data was developed using the same antibody clone with 12622-1-PBS in a different storage buffer formulation.



Immunohistochemical analysis of paraffin-embedded rat testis tissue slide using 12622-1-AP (RFX2 antibody) at dilution of 1:200 (under 40x lens). Heat mediated antigen retrieval with Tris-EDTA buffer (pH 9.0). This data was developed using the same antibody clone with 12622-1-PBS in a different storage buffer formulation.



IP result of anti-RFX2 (IP:12622-1-AP, 4ug; Detection:12622-1-AP 1:1000) with THP-1 cells lysate 1920 ug. This data was developed using the same antibody clone with 12622-1-PBS in a different storage buffer formulation.