

For Research Use Only

# RFX2 Polyclonal antibody

Catalog Number: 12622-1-AP

1 Publications



## Basic Information

Catalog Number:

12622-1-AP

Concentration:

450 ug/ml

Source:

Rabbit

Isotype:

IgG

Immunogen Catalog Number:

AG3310

GenBank Accession Number:

BC028579

GeneID (NCBI):

5990

UNIPROT ID:

P48378

Full Name:

regulatory factor X, 2 (influences HLA class II expression)

Calculated MW:

723 aa, 80 kDa

Observed MW:

80 kDa

Purification Method:

Antigen affinity purification

Recommended Dilutions:

WB 1:1000-1:6000

IP 0.5-4.0 ug for 1.0-3.0 mg of total protein lysate

IHC 1:50-1:500

## Applications

Tested Applications:

WB, IHC, IP, ELISA

Cited Applications:

WB, IHC

Species Specificity:

human, mouse, rat

Cited Species:

mouse

Positive Controls:

WB : THP-1 cells,

IP : THP-1 cells,

IHC : rat testis tissue, mouse testis tissue

**Note-IHC: suggested antigen retrieval with TE buffer pH 9.0; (\*) Alternatively, antigen retrieval may be performed with citrate buffer pH 6.0**

## Background Information

RFX2 is a key regulator of ciliogenesis in vertebrates, and knockdown of Rfx2 causes defects in neural tube closure and in left-right axis patterning (PMID: 26248850). RFX2 expression is greatly enhanced in adult testis and that RFX2 is equally prominent in highly enriched populations of late pachytene spermatocytes and round spermatids (PMID: 22227339). RFX2 is also required for the development of left-right asymmetry, and motile cilia on RFX2-expressing cells are sufficient to establish adequate fluid flow across the COA to direct normal LR development in mouse (PMID: 22233545).

## Notable Publications

Author	Pubmed ID	Journal	Application
Shintaro Mikami	35714115	PLoS One	WB, IHC

## Storage

Storage:

Store at -20°C. Stable for one year after shipment.

Storage Buffer:

PBS with 0.02% sodium azide and 50% glycerol, pH7.3

Aliquoting is unnecessary for -20°C storage

For technical support and original validation data for this product please contact:

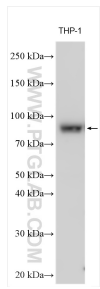
T: 4006900926

E: [Proteintech-CN@ptglab.com](mailto:Proteintech-CN@ptglab.com)

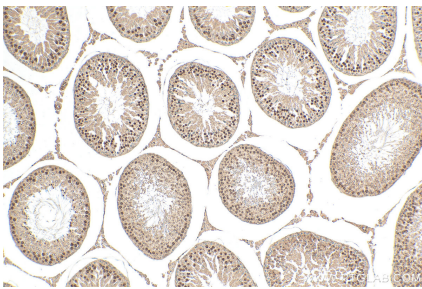
W: [ptgcn.com](http://ptgcn.com)

**This product is exclusively available under Proteintech Group brand and is not available to purchase from any other manufacturer.**

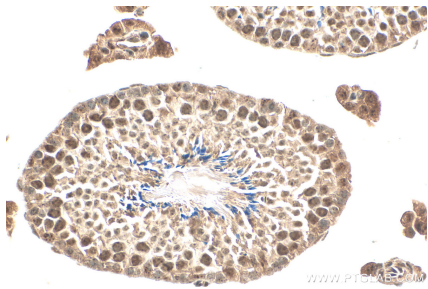
Selected Validation Data



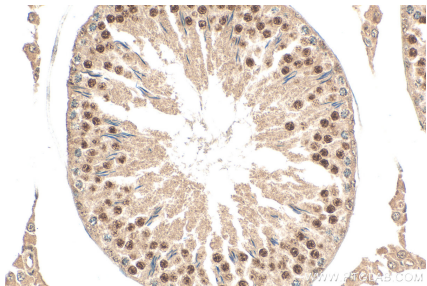
Various lysates were subjected to SDS PAGE followed by western blot with 12622-1-AP (RFX2 antibody) at dilution of 1:3000 incubated at room temperature for 1.5 hours.



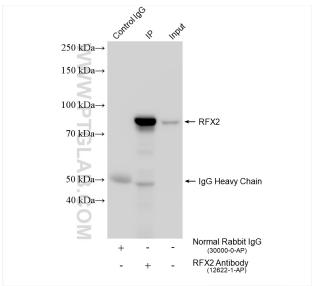
Immunohistochemical analysis of paraffin-embedded rat testis tissue slide using 12622-1-AP (RFX2 antibody) at dilution of 1:200 (under 10x lens). Heat mediated antigen retrieval with Tris-EDTA buffer (pH 9.0).



Immunohistochemical analysis of paraffin-embedded mouse testis tissue slide using 12622-1-AP (RFX2 antibody) at dilution of 1:200 (under 40x lens). Heat mediated antigen retrieval with Tris-EDTA buffer (pH 9.0).



Immunohistochemical analysis of paraffin-embedded rat testis tissue slide using 12622-1-AP (RFX2 antibody) at dilution of 1:200 (under 40x lens). Heat mediated antigen retrieval with Tris-EDTA buffer (pH 9.0).



IP result of anti-RFX2 (IP:12622-1-AP, 4ug; Detection:12622-1-AP 1:1000) with THP-1 cells lysate 1920 ug.