

For Research Use Only

MICA Polyclonal antibody

Catalog Number: 12619-1-AP **2 Publications**



Basic Information

Catalog Number:

12619-1-AP

Size:

200 µg/ml

Source:

Rabbit

Isotype:

IgG

Immunogen Catalog Number:

AG3298

GenBank Accession Number:

BC016929

GeneID (NCBI):

100507436

UNIPROT ID:

Q29983

Full Name:

MHC class I polypeptide-related sequence A

Calculated MW:

383 aa, 43 kDa

Observed MW:

43 kDa, 50-55 kDa

Purification Method:

Antigen affinity purification

Recommended Dilutions:

WB 1:500-1:1000

Applications

Tested Applications:

WB, ELISA

Cited Applications:

WB

Species Specificity:

human

Cited Species:

human

Positive Controls:

WB : K-562 cells, HeLa cells

Background Information

Human MHC class I chain-related genes located within the HLA class I region of chromosome 6 encode MHC class I chain-related A and B (MICA and MICB) (PMID: 11429322). MICA and MICB are stress-inducible surface molecules that are not associated with β 2-microglobulin and do not present peptides (PMID: 9497295). They are expressed in intestinal epithelium and many epithelial tumors (PMID: 10359807). MICA and MICB are ligands for NKG2D which is an activating receptor that is expressed on most natural killer (NK) cells, CD8 α β T cells, and γ δ T cells (PMID: 10426993; 11491531).

Notable Publications

Author	Pubmed ID	Journal	Application
Qiulin Wu	38254761	Cancers (Basel)	WB
Xicai Li	36765808	Cancers (Basel)	WB

Storage

Storage:

Store at -20°C. Stable for one year after shipment.

Storage Buffer:

PBS with 0.02% sodium azide and 50% glycerol pH 7.3.

Aliquoting is unnecessary for -20°C storage

For technical support and original validation data for this product please contact:

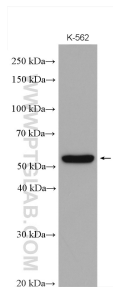
T: 4006900926

E: Proteintech-CN@ptglab.com

W: ptgcn.com

This product is exclusively available under Proteintech Group brand and is not available to purchase from any other manufacturer.

Selected Validation Data



K-562 cells were subjected to SDS PAGE followed by western blot with 12619-1-AP (MICA antibody) at dilution of 1:600 incubated at room temperature for 1.5 hours.