

For Research Use Only

GCLC Polyclonal antibody, PBS Only

Catalog Number: 12601-1-PBS

Featured Product



Basic Information

Catalog Number:

12601-1-PBS

Source:

Rabbit

Isotype:

IgG

Immunogen Catalog Number:

AG3252

GenBank Accession Number:

BC022487

GeneID (NCBI):

2729

UNIPROT ID:

P48506

Full Name:

glutamate-cysteine ligase, catalytic subunit

Calculated MW:

637 aa, 73 kDa

Observed MW:

73 kDa

Purification Method:

Antigen affinity purification

Applications

Tested Applications:

WB, IHC, IP, ELISA

Species Specificity:

human, mouse, rat

Background Information

GCLC (Glutamate--cysteine ligase catalytic subunit) belongs to the glutamate--cysteine ligase type 3 family. It is also named as GLCL, GLCLC. It is the first rate-limiting enzyme in glutathione (GSH) biosynthesis. GCLC gene may be associated with coronary endothelial vasomotor dysfunction and myocardial infarction (MI) (PMID:12598062). Defects in GCLC are the cause of hemolytic anemia (HAGGSD).

Storage

Storage:

Store at -80°C.

The product is shipped with ice packs. Upon receipt, store it immediately at -80°C

Storage Buffer:

PBS only, pH7.3

For technical support and original validation data for this product please contact:

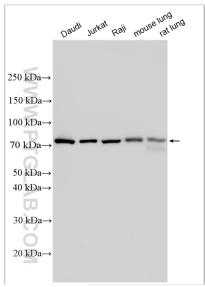
T: 4006900926

E: Proteintech-CN@ptglab.com

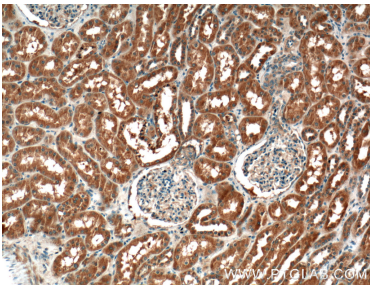
W: ptgcn.com

This product is exclusively available under Proteintech Group brand and is not available to purchase from any other manufacturer.

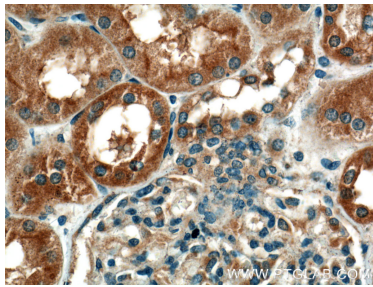
Selected Validation Data



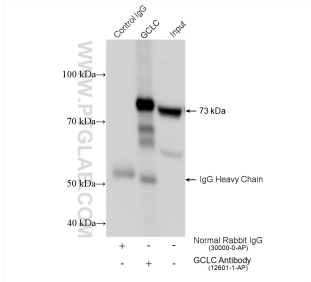
Various lysates were subjected to SDS PAGE followed by western blot with 12601-1-AP (GCLC antibody) at dilution of 1:15000 incubated at room temperature for 1.5 hours. This data was developed using the same antibody clone with 12601-1-PBS in a different storage buffer formulation.



Immunohistochemical analysis of paraffin-embedded human kidney tissue slide using 12601-1-AP (GCLC Antibody) at dilution of 1:200 (under 10x lens). This data was developed using the same antibody clone with 12601-1-PBS in a different storage buffer formulation.



Immunohistochemical analysis of paraffin-embedded human kidney tissue slide using 12601-1-AP (GCLC Antibody) at dilution of 1:200 (under 40x lens). This data was developed using the same antibody clone with 12601-1-PBS in a different storage buffer formulation.



IP result of anti-GCLC (IP:12601-1-AP, 4ug; Detection:12601-1-AP 1:5000) with mouse kidney tissue lysate 2160 ug. This data was developed using the same antibody clone with 12601-1-PBS in a different storage buffer formulation.