

For Research Use Only

# OLFM3 Polyclonal antibody

Catalog Number: 12596-1-AP

1 Publications



## Basic Information

Catalog Number:

12596-1-AP

Size:

300 µg/ml

Source:

Rabbit

Isotype:

IgG

Immunogen Catalog Number:

AG3207

GenBank Accession Number:

BC022531

GeneID (NCBI):

118427

UNIPROT ID:

Q96PB7

Full Name:

olfactomedin 3

Calculated MW:

458 aa, 53 kDa

Observed MW:

50-55 kDa

Purification Method:

Antigen affinity purification

Recommended Dilutions:

WB 1:500-1:2000

IHC 1:20-1:200

IF/ICC 1:10-1:100

## Applications

Tested Applications:

WB, IHC, IF/ICC, ELISA

Cited Applications:

WB, IF

Species Specificity:

human, mouse

Cited Species:

human

**Note-IHC: suggested antigen retrieval with TE buffer pH 9.0; (\*) Alternatively, antigen retrieval may be performed with citrate buffer pH 6.0**

Positive Controls:

WB : PC-3 cells, A2780 cells, human liver tissue, mouse liver tissue, NIH/3T3 cells

IHC : human liver cancer tissue,

IF/ICC : HepG2 cells,

## Background Information

### Notable Publications

Author	Pubmed ID	Journal	Application
Shirong Tang	32850838	Front Cell Dev Biol	WB,IF

## Storage

Storage:

Store at -20°C. Stable for one year after shipment.

Storage Buffer:

PBS with 0.02% sodium azide and 50% glycerol pH 7.3.

Aliquoting is unnecessary for -20°C storage

For technical support and original validation data for this product please contact:

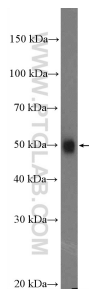
T: 4006900926

E: [Proteintech-CN@ptglab.com](mailto:Proteintech-CN@ptglab.com)

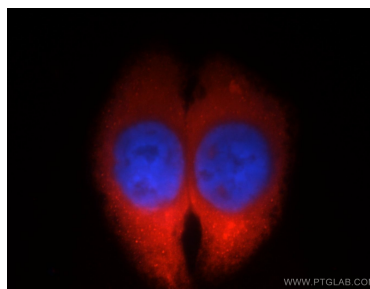
W: [ptgcn.com](http://ptgcn.com)

This product is exclusively available under Proteintech Group brand and is not available to purchase from any other manufacturer.

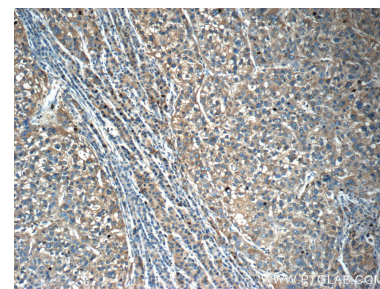
## Selected Validation Data



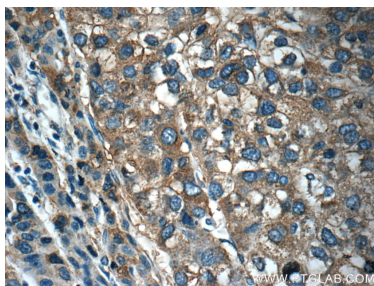
PC-3 cells were subjected to SDS PAGE followed by western blot with 12596-1-AP (OLFM3 Antibody) at dilution of 1:1000 incubated at room temperature for 1.5 hours.



Immunofluorescent analysis of HepG2 cells, using OLFM3 antibody 12596-1-AP at 1:25 dilution and Rhodamine-labeled goat anti-rabbit IgG (red). Blue pseudocolor = DAPI (fluorescent DNA dye).



Immunohistochemical analysis of paraffin-embedded human liver cancer tissue slide using 12596-1-AP (OLFM3 Antibody) at dilution of 1:50 (under 10x lens).



Immunohistochemical analysis of paraffin-embedded human liver cancer tissue slide using 12596-1-AP (OLFM3 Antibody) at dilution of 1:50 (under 40x lens).