

CRABP1 Polyclonal antibody

Catalog Number: 12588-1-AP

6 Publications

Basic Information

Catalog Number:

12588-1-AP

Size:

700 µg/ml

Source:

Rabbit

Isotype:

IgG

Immunogen Catalog Number:

AG3291

GenBank Accession Number:

BC022069

GeneID (NCBI):

1381

UNIPROT ID:

P29762

Full Name:

cellular retinoic acid binding protein

1

Calculated MW:

137 aa, 15 kDa

Observed MW:

15 kDa

Purification Method:

Antigen affinity purification

Recommended Dilutions:

WB 1:200-1:1000

IHC 1:500-1:2000

Applications

Tested Applications:

IHC, WB, ELISA

Cited Applications:

WB, IF, IHC

Species Specificity:

human, mouse, rat

Cited Species:

human, chicken, mouse, rabbit

Note-IHC: suggested antigen retrieval with TE buffer pH 9.0; (*) Alternatively, antigen retrieval may be performed with citrate buffer pH 6.0

Positive Controls:

WB : mouse embryo tissue, human spleen tissue, Transfected HEK-293 cells

IHC : human lung cancer tissue,

Background Information

The cellular retinoic acid-binding proteins including CRABP1 and CRABP2 bind retinoic acid (RA), an important regulator of cell growth and differentiation, thus play an important role in RA-mediated differentiation and proliferation processes. It has been reported that CRABP1 influences the biological effects of RA in cell-selective manners by enhancing the physiological function of RA in keratinocytes or inhibiting RA-induced differentiation of neuroblastoma cells.

Notable Publications

Author	Pubmed ID	Journal	Application
Ying Zhu	31682227	Elife	IF
Xiaofei Niu	35764970	Virol J	WB
Marie Kubota	33472062	Cell Rep	WB

Storage

Storage:

Store at -20°C. Stable for one year after shipment.

Storage Buffer:

PBS with 0.02% sodium azide and 50% glycerol pH 7.3.

Aliquoting is unnecessary for -20°C storage

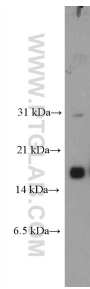
For technical support and original validation data for this product please contact:

T: 4006900926

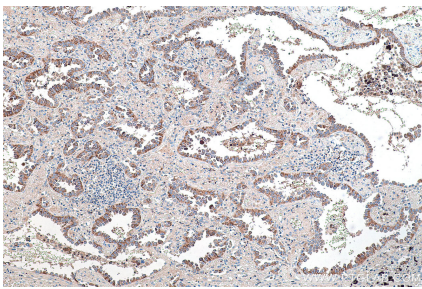
E: Proteintech-CN@ptglab.comW: ptgcn.com

This product is exclusively available under Proteintech Group brand and is not available to purchase from any other manufacturer.

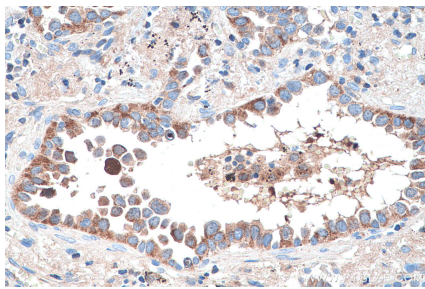
Selected Validation Data



mouse embryo tissue were subjected to SDS PAGE followed by western blot with 12588-1-AP (CRABP1 Antibody) at dilution of 1:300 incubated at room temperature for 1.5 hours.



Immunohistochemical analysis of paraffin-embedded human lung cancer tissue slide using 12588-1-AP (CRABP1 antibody) at dilution of 1:1000 (under 10x lens). Heat mediated antigen retrieval with Tris-EDTA buffer (pH 9.0).



Immunohistochemical analysis of paraffin-embedded human lung cancer tissue slide using 12588-1-AP (CRABP1 antibody) at dilution of 1:1000 (under 40x lens). Heat mediated antigen retrieval with Tris-EDTA buffer (pH 9.0).