

For Research Use Only

EXOSC1 Polyclonal antibody

Catalog Number: 12585-1-AP

Featured Product

2 Publications



Basic Information

Catalog Number:

12585-1-AP

Size:

350 ug/ml

Source:

Rabbit

Isotype:

IgG

Immunogen Catalog Number:

AG3286

GenBank Accession Number:

BC022067

GeneID (NCBI):

51013

UNIPROT ID:

Q9Y3B2

Full Name:

exosome component 1

Calculated MW:

195 aa, 21 kDa

Observed MW:

21 kDa

Purification Method:

Antigen affinity purification

Recommended Dilutions:

WB 1:500-1:1000

IP 0.5-4.0 ug for 1.0-3.0 mg of total protein lysate

IHC 1:20-1:200

Applications

Tested Applications:

WB, IHC, IP, ELISA

Cited Applications:

WB

Species Specificity:

human, mouse, rat

Cited Species:

human, yeast

Note-IHC: suggested antigen retrieval with TE buffer pH 9.0; (*) Alternatively, antigen retrieval may be performed with citrate buffer pH 6.0

Positive Controls:

WB : SGC-7901 cells, HeLa cells, human stomach tissue, Jurkat cells, MCF-7 cells

IP : HeLa cells,

IHC : human lymphoma tissue,

Background Information

EXOSC1 is a core component of the exosome. The mammalian exosome is required for rapid degradation of AU rich element-containing RNAs but not for poly(A) shortening.

Notable Publications

Author	Pubmed ID	Journal	Application
Tobias Moll	36241425	Life Sci Alliance	WB
Nadirah S Damseh	37024942	Am J Med Genet A	WB

Storage

Storage:

Store at -20°C. Stable for one year after shipment.

Storage Buffer:

PBS with 0.02% sodium azide and 50% glycerol pH 7.3.

Aliquoting is unnecessary for -20°C storage

For technical support and original validation data for this product please contact:

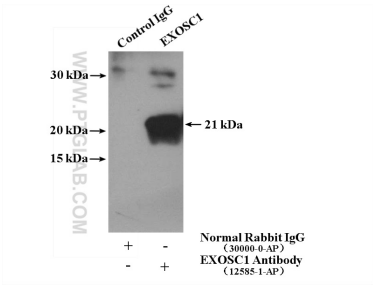
T: 4006900926

E: Proteintech-CN@ptglab.com

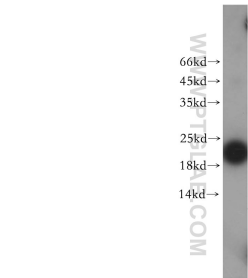
W: ptgcn.com

This product is exclusively available under Proteintech Group brand and is not available to purchase from any other manufacturer.

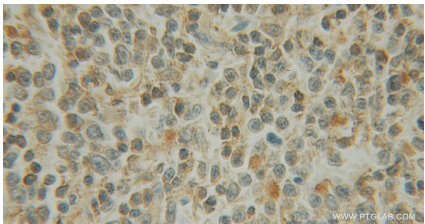
Selected Validation Data



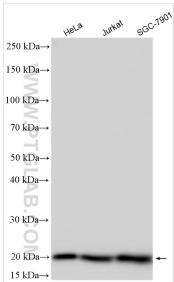
IP result of anti-EXOSC1 (IP:12585-1-AP, 4ug; Detection:12585-1-AP 1:600) with HeLa cells lysate 3000 ug.



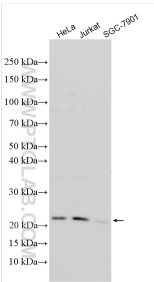
SGC-7901 cells were subjected to SDS PAGE followed by western blot with 12585-1-AP (EXOSC1 antibody) at dilution of 1:200 incubated at room temperature for 1.5 hours.



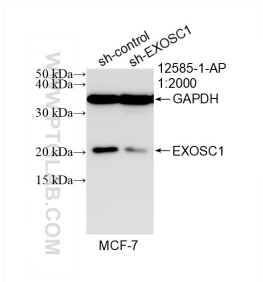
Immunohistochemical analysis of paraffin-embedded human lymphoma using 12585-1-AP (EXOSC1 antibody) at dilution of 1:100 (under 10x lens).



Various lysates were subjected to SDS PAGE followed by western blot with 12585-1-AP (EXOSC1 antibody) at dilution of 1:5000 incubated at room temperature for 1.5 hours.



Various lysates were subjected to SDS PAGE followed by western blot with 12585-1-AP (EXOSC1 antibody) at dilution of 1:3000 incubated at room temperature for 1.5 hours.



WB result of EXOSC1 antibody (12585-1-AP; 1:2000; incubated at room temperature for 1.5 hours) with sh-Control and sh-EXOSC1 transfected MCF-7 cells.