

For Research Use Only

# UBE2Q2 Polyclonal antibody

Catalog Number: 12581-1-AP **2 Publications**



## Basic Information

**Catalog Number:**

12581-1-AP

**Size:**

800 µg/ml

**Source:**

Rabbit

**Isotype:**

IgG

**Immunogen Catalog Number:**

AG3276

**GenBank Accession Number:**

BC017708

**GeneID (NCBI):**

92912

**UNIPROT ID:**

Q8WVN8

**Full Name:**

ubiquitin-conjugating enzyme E2Q family member 2

**Calculated MW:**

375 aa, 43 kDa

**Observed MW:**

43 kDa

**Purification Method:**

Antigen affinity purification

**Recommended Dilutions:**

WB 1:500-1:2000

IP 0.5-4.0 µg for 1.0-3.0 mg of total protein lysate

IHC 1:20-1:200

## Applications

**Tested Applications:**

IHC, IP, WB, ELISA

**Cited Applications:**

WB

**Species Specificity:**

human, mouse, rat

**Cited Species:**

human, mouse

**Note-IHC: suggested antigen retrieval with TE buffer pH 9.0; (\*) Alternatively, antigen retrieval may be performed with citrate buffer pH 6.0**

**Positive Controls:**

WB: A431 cells, mouse ovary tissue, HEK-293T cells

IP: HEK-293T cells,

IHC: human skin cancer tissue,

## Background Information

### Notable Publications

Author	Pubmed ID	Journal	Application
Lei Sun	33636127	Cell	WB
Xiao Hu	38410210	Transl Cancer Res	WB

## Storage

**Storage:**

Store at -20°C. Stable for one year after shipment.

**Storage Buffer:**

PBS with 0.02% sodium azide and 50% glycerol pH 7.3.

Aliquoting is unnecessary for -20°C storage

For technical support and original validation data for this product please contact:

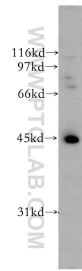
T: 4006900926

E: Proteintech-CN@ptglab.com

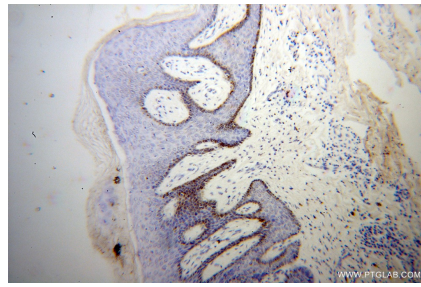
W: ptgcn.com

**This product is exclusively available under Proteintech Group brand and is not available to purchase from any other manufacturer.**

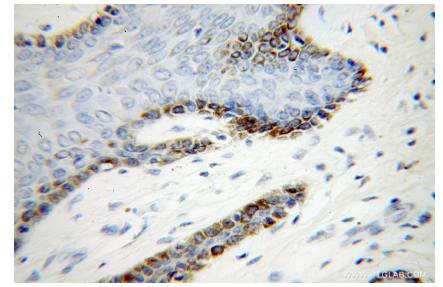
## Selected Validation Data



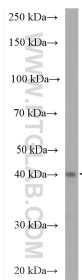
A431 cells were subjected to SDS PAGE followed by western blot with 12581-1-AP (UBE2Q2 antibody) at dilution of 1:400 incubated at room temperature for 1.5 hours.



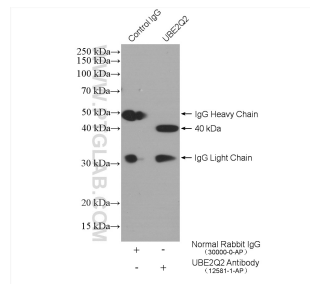
Immunohistochemical analysis of paraffin-embedded human skin cancer using 12581-1-AP (UBE2Q2 antibody) at dilution of 1:100 (under 10x lens).



Immunohistochemical analysis of paraffin-embedded human skin cancer using 12581-1-AP (UBE2Q2 antibody) at dilution of 1:100 (under 40x lens).



HEK-293T cells were subjected to SDS PAGE followed by western blot with 12581-1-AP (UBE2Q2 antibody) at dilution of 1:500 incubated at room temperature for 1.5 hours.



IP result of anti-UBE2Q2 (IP:12581-1-AP, 4ug; Detection:12581-1-AP 1:300) with HEK-293T cells lysate 1320 ug.