

For Research Use Only

PPP2CB Polyclonal antibody

Catalog Number: 12554-2-AP

Featured Product

3 Publications



Basic Information

Catalog Number:

12554-2-AP

Size:

200 ug/ml

Source:

Rabbit

Isotype:

IgG

Immunogen Catalog Number:

AG3233

GenBank Accession Number:

BC012022

GeneID (NCBI):

5516

UNIPROT ID:

P62714

Full Name:

protein phosphatase 2 (formerly 2A),
catalytic subunit, beta isoform

Calculated MW:

309 aa, 36 kDa

Observed MW:

36 kDa

Purification Method:

Antigen affinity purification

Recommended Dilutions:

WB 1:500-1:2000

IP 0.5-4.0 ug for 1.0-3.0 mg of total
protein lysate

IHC 1:250-1:1000

Applications

Tested Applications:

WB, IHC, IP, ELISA

Cited Applications:

WB, CoIP

Species Specificity:

human, mouse, rat

Cited Species:

human, mouse

**Note-IHC: suggested antigen retrieval with
TE buffer pH 9.0; (*) Alternatively, antigen
retrieval may be performed with citrate
buffer pH 6.0**

Positive Controls:

WB : mouse lung tissue, U2OS cells

IP : NIH/3T3 cells,

IHC : rat kidney tissue, human stomach cancer tissue

Background Information

Notable Publications

Author	Pubmed ID	Journal	Application
Chunmin Li	30151693	Cell Mol Life Sci	WB, CoIP
Baoyu Chen	32903816	Front Cell Dev Biol	WB
Mengmeng Zhang	39033992	Cell Signal	WB, CoIP

Storage

Storage:

Store at -20°C. Stable for one year after shipment.

Storage Buffer:

PBS with 0.02% sodium azide and 50% glycerol pH 7.3.

Aliquoting is unnecessary for -20°C storage

For technical support and original validation data for this product please contact:

T: 4006900926

E: Proteintech-CN@ptglab.com

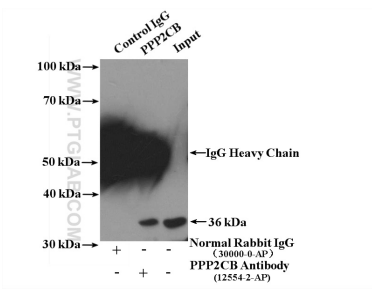
W: ptgcn.com

This product is exclusively available under Proteintech Group brand and is not available to purchase from any other manufacturer.

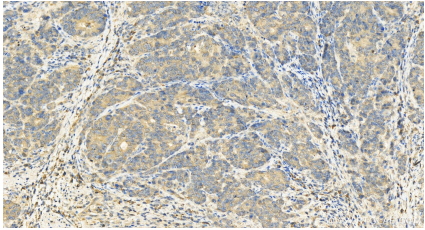
Selected Validation Data



mouse lung tissue were subjected to SDS PAGE followed by western blot with 12554-2-AP (PPP2CB antibody) at dilution of 1:400 incubated at room temperature for 1.5 hours.



IP result of anti-PPP2CB (IP:12554-2-AP, 4ug; Detection:12554-2-AP 1:300) with NIH/3T3 cells lysate 4000ug.



Immunohistochemical analysis of paraffin-embedded human stomach cancer tissue slide using 12554-2-AP (PPP2CB antibody) at dilution of 1:200 (under 20x lens). Heat mediated antigen retrieval with Sodium Citrate buffer (pH 6.0).



Immunohistochemical analysis of paraffin-embedded rat kidney tissue slide using 12554-2-AP (PPP2CB antibody) at dilution of 1:500 (under 40x lens). Heat mediated antigen retrieval with Tris-EDTA buffer (pH 9.0).