

For Research Use Only

DPP10 Polyclonal antibody, PBS Only

Catalog Number:12553-1-PBS



Basic Information

Catalog Number: 12553-1-PBS	GenBank Accession Number: BC030832	Purification Method: Antigen affinity purification
Concentration: 1 mg/ml	GeneID (NCBI): 57628	
Source: Rabbit	UNIPROT ID: Q8N608	
Isotype: IgG	Full Name: dipeptidyl-peptidase 10	
Immunogen Catalog Number: AG3231	Calculated MW: 796 aa, 91 kDa	
	Observed MW: 91 kDa	

Applications

Tested Applications:
WB, Indirect ELISA

Species Specificity:
human, mouse, rat, pig

Background Information

DPP10 (dipeptidyl aminopeptidase-like protein 10) is a single-pass type II membrane protein that is a member of the S9B family in clan SC of the serine proteases. DPP10 is an inactive peptidase that modulates the electrophysiological properties, cell-surface expression and subcellular localization of voltage-gated potassium channels (PMID: 30638748). DPP10 is prominently expressed in the brain, notably present in neuronal populations (PMID: 15671030).

Storage

Storage:
Store at -80°C.
The product is shipped with ice packs. Upon receipt, store it immediately at -80°C

Storage Buffer:
PBS only, pH7.3

For technical support and original validation data for this product please contact:

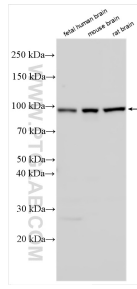
T: 4006900926

E: Proteintech-CN@ptglab.com

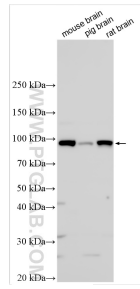
W: ptgcn.com

This product is exclusively available under Proteintech Group brand and is not available to purchase from any other manufacturer.

Selected Validation Data



Various lysates were subjected to SDS PAGE followed by western blot with 12553-1-AP (DPP10 antibody) at dilution of 1:3000 incubated at room temperature for 1.5 hours. This data was developed using the same antibody clone with 12553-1-PBS in a different storage buffer formulation.



Various lysates were subjected to SDS PAGE followed by western blot with 12553-1-AP (DPP10 antibody) at dilution of 1:2000 incubated at room temperature for 1.5 hours. This data was developed using the same antibody clone with 12553-1-PBS in a different storage buffer formulation.