

For Research Use Only

Amylase Alpha Polyclonal antibody, PBS Only

Catalog Number: 12540-1-PBS



Basic Information

Catalog Number:

12540-1-PBS

Source:

Rabbit

Isotype:

IgG

Immunogen Catalog Number:

AG3260

GenBank Accession Number:

BC011179

GeneID (NCBI):

280

UNIPROT ID:

P19961

Full Name:

amylase, alpha 2B (pancreatic)

Calculated MW:

511 aa, 58 kDa

Observed MW:

58 kDa

Purification Method:

Antigen affinity purification

Applications

Tested Applications:

WB, IHC, IF-P, Indirect ELISA

Species Specificity:

human, mouse, rat

Background Information

AMY2B(alpha-amylase 2B) belongs to the glycosyl hydrolase 13 family. This protein is involved in the endohydrolysis of 1,4-alpha-glucosidic linkages in oligosaccharides and polysaccharides. The full length 58 kDa protein has a signal peptide with 15 amino acids. Human amylases (Amy1, Amy2A, and Amy2B) commonly have two potential N-glycosylation sites (N427 and N476) in their C-terminal region (S Takashima, J Amano, 2012). 12540-1-AP can recognize both AMY2A and AMY2B.

Storage

Storage:

Store at -80°C.

The product is shipped with ice packs. Upon receipt, store it immediately at -80°C

Storage Buffer:

PBS only, pH7.3

For technical support and original validation data for this product please contact:

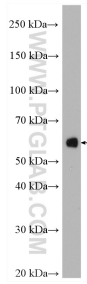
T: 4006900926

E: Proteintech-CN@ptglab.com

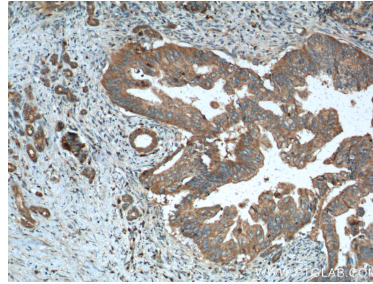
W: ptgcn.com

This product is exclusively available under Proteintech Group brand and is not available to purchase from any other manufacturer.

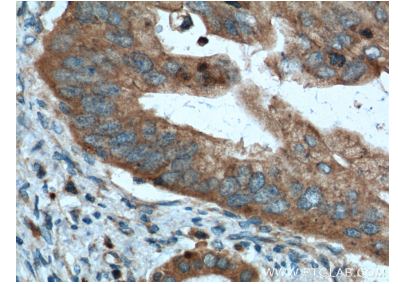
Selected Validation Data



mouse pancreas tissue were subjected to SDS PAGE followed by western blot with 12540-1-AP (Amylase, alpha antibody) at dilution of 1:20000 incubated at room temperature for 1.5 hours. This data was developed using the same antibody clone with 12540-1-PBS in a different storage buffer formulation.



Immunohistochemical analysis of paraffin-embedded human pancreas cancer tissue slide using 12540-1-AP (Amylase, alpha antibody at dilution of 1:200 (under 10x lens). Heat mediated antigen retrieval with Tris-EDTA buffer (pH 9.0). This data was developed using the same antibody clone with 12540-1-PBS in a different storage buffer formulation.



Immunohistochemical analysis of paraffin-embedded human pancreas cancer tissue slide using 12540-1-AP (Amylase, alpha antibody at dilution of 1:200 (under 40x lens). Heat mediated antigen retrieval with Tris-EDTA buffer (pH 9.0). This data was developed using the same antibody clone with 12540-1-PBS in a different storage buffer formulation.



Immunofluorescent analysis of (4% PFA) fixed paraffin-embedded rat pancreas tissue using Amylase Alpha antibody (12540-1-AP) at dilution of 1:400 and CoraLite®488-Conjugated Goat Anti-Rabbit IgG(H+L) (SA00013-2). Heat mediated antigen retrieval with Tris-EDTA buffer (pH 9.0). This data was developed using the same antibody clone with 12540-1-PBS in a different storage buffer formulation.