

For Research Use Only

Amylase Alpha Polyclonal antibody

Catalog Number: 12540-1-AP

10 Publications



Basic Information

Catalog Number: 12540-1-AP	GenBank Accession Number: BC011179	Purification Method: Antigen affinity purification
Size: 750 µg/ml	GeneID (NCBI): 280	Recommended Dilutions: WB 1:5000-1:20000 IHC 1:50-1:500
Source: Rabbit	UNIPROT ID: P19961	
Isotype: IgG	Full Name: amylase, alpha 2B (pancreatic)	
Immunogen Catalog Number: AG3260	Calculated MW: 511 aa, 58 kDa	
	Observed MW: 58 kDa	

Applications

Tested Applications: IHC, WB, ELISA	Positive Controls: WB : mouse pancreas tissue, IHC : human pancreas cancer tissue,
Cited Applications: WB, IF, IHC	
Species Specificity: human, mouse, rat	
Cited Species: human, rat, mouse	
Note-IHC: suggested antigen retrieval with TE buffer pH 9.0; (*) Alternatively, antigen retrieval may be performed with citrate buffer pH 6.0	

Background Information

AMY2B(alpha-amylase 2B) belongs to the glycosyl hydrolase 13 family. This protein is involved in the endohydrolysis of 1,4-alpha-glucosidic linkages in oligosaccharides and polysaccharides. The full length 58 kDa protein has a signal peptide with 15 amino acids. Human amylases (Amy1, Amy2A, and Amy2B) commonly have two potential N-glycosylation sites (N427 and N476) in their C-terminal region (S Takashima, J Amano, 2012). 12540-1-AP can recognize both AMY2A and AMY2B.

Notable Publications

Author	Pubmed ID	Journal	Application
Takafumi Fuchino	35672698	BMC Gastroenterol	IHC
Xufeng Tao	32070876	Biomed Pharmacother	IF
Mengmeng Liu	34890544	Eur J Pharmacol	IF

Storage

Storage:
Store at -20°C. Stable for one year after shipment.
Storage Buffer:
PBS with 0.02% sodium azide and 50% glycerol pH 7.3.
Aliquoting is unnecessary for -20°C storage

For technical support and original validation data for this product please contact:

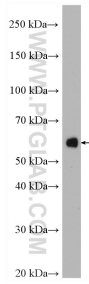
T: 4006900926

E: Proteintech-CN@ptglab.com

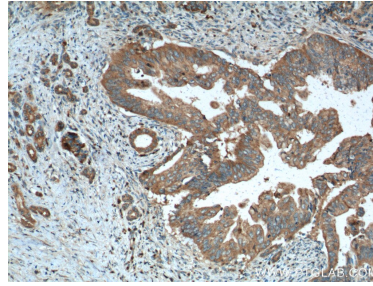
W: ptgcn.com

This product is exclusively available under Proteintech Group brand and is not available to purchase from any other manufacturer.

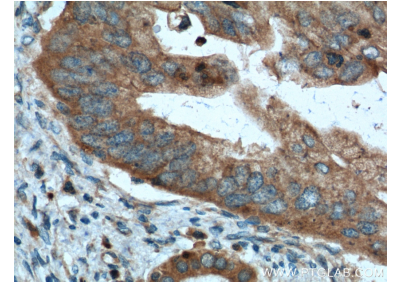
Selected Validation Data



mouse pancreas tissue were subjected to SDS PAGE followed by western blot with 12540-1-AP (Amylase, alpha antibody) at dilution of 1:20000 incubated at room temperature for 1.5 hours.



Immunohistochemical analysis of paraffin-embedded human pancreas cancer tissue slide using 12540-1-AP (Amylase, alpha antibody at dilution of 1:200 (under 10x lens). Heat mediated antigen retrieval with Tris-EDTA buffer (pH 9.0).



Immunohistochemical analysis of paraffin-embedded human pancreas cancer tissue slide using 12540-1-AP (Amylase, alpha antibody at dilution of 1:200 (under 40x lens). Heat mediated antigen retrieval with Tris-EDTA buffer (pH 9.0).