

PSMD6 Polyclonal antibody

Catalog Number: 12539-1-AP

1 Publications

Basic Information

Catalog Number:

12539-1-AP

Size:

800 µg/ml

Source:

Rabbit

Isotype:

IgG

Immunogen Catalog Number:

AG3251

GenBank Accession Number:

BC012369

GeneID (NCBI):

9861

UNIPROT ID:

Q15008

Full Name:

proteasome (prosome, macropain)

26S subunit, non-ATPase, 6

Calculated MW:

389 aa, 46 kDa

Observed MW:

46 kDa

Purification Method:

Antigen affinity purification

Recommended Dilutions:

WB 1:1000-1:6000

IP 0.5-4.0 µg for 1.0-3.0 mg of total

protein lysate

IHC 1:50-1:500

Applications

Tested Applications:

IHC, IP, WB, ELISA

Cited Applications:

WB

Species Specificity:

human, mouse, rat

Cited Species:

human

Positive Controls:

WB : HEK-293 cells, HeLa cells, Jurkat cells

IP : K-562 cells,

IHC : mouse testis tissue, mouse brain tissue, mouse kidney tissue

Note-IHC: suggested antigen retrieval with *TE buffer pH 9.0*; (*) Alternatively, antigen retrieval may be performed with *citrate buffer pH 6.0*

Background Information

The 26 S proteasome is a 2.5-MDa molecular machine that degrades ubiquitinated proteins in eukaryotic cells. It consists of a proteolytic core particle and two 19 S regulatory particles (RPs) composed of 6 ATPase (RPT) and 13 non-ATPase (RPN) subunits. PSMD6 gene encodes 26S proteasome regulatory subunit RPN7, the characteristic of this protein is not well known to date.

Notable Publications

| Author | Pubmed ID | Journal | Application |
|---------------|-----------|---------|-------------|
| Nassim Ledoux | 38132127 | Cells | WB |

Storage

Storage:

Store at -20°C. Stable for one year after shipment.

Storage Buffer:

PBS with 0.02% sodium azide and 50% glycerol pH 7.3.

Aliquoting is unnecessary for -20°C storage

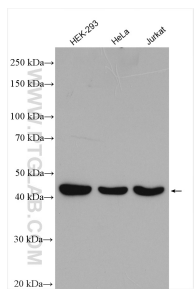
For technical support and original validation data for this product please contact:

T: 4006900926

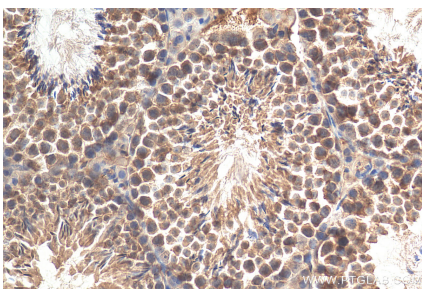
E: Proteintech-CN@ptglab.comW: ptgcn.com

This product is exclusively available under Proteintech Group brand and is not available to purchase from any other manufacturer.

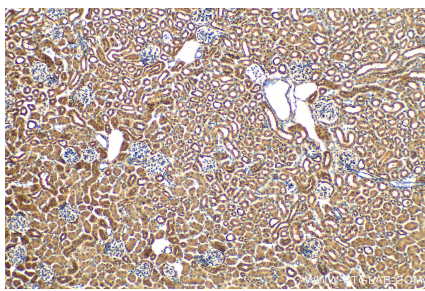
Selected Validation Data



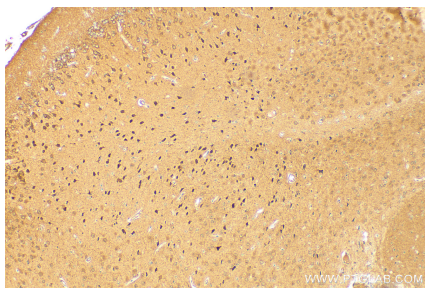
Various lysates were subjected to SDS PAGE followed by western blot with 12539-1-AP (PSMD6 antibody) at dilution of 1:3000 incubated at room temperature for 1.5 hours.



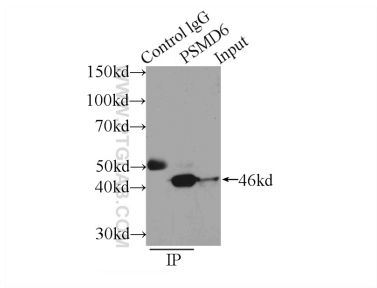
Immunohistochemical analysis of paraffin-embedded mouse testis tissue slide using 12539-1-AP (PSMD6 antibody) at dilution of 1:200 (under 40x lens). Heat mediated antigen retrieval with Tris-EDTA buffer (pH 9.0).



Immunohistochemical analysis of paraffin-embedded mouse kidney tissue slide using 12539-1-AP (PSMD6 antibody) at dilution of 1:200 (under 10x lens). Heat mediated antigen retrieval with Tris-EDTA buffer (pH 9.0).



Immunohistochemical analysis of paraffin-embedded mouse brain tissue slide using 12539-1-AP (PSMD6 antibody) at dilution of 1:200 (under 10x lens). Heat mediated antigen retrieval with Tris-EDTA buffer (pH 9.0).



IP result of anti-PSMD6 (IP:12539-1-AP, 3ug; Detection:12539-1-AP 1:500) with K-562 cells lysate 1500ug.