

For Research Use Only

GAGE2D Polyclonal antibody

Catalog Number: 12532-1-AP



Basic Information

Catalog Number:

12532-1-AP

Size:

1000 µg/ml

Source:

Rabbit

Isotype:

IgG

Immunogen Catalog Number:

AG3230

GenBank Accession Number:

BC018052

GeneID (NCBI):

729408

UNIPROT ID:

Q9UEU5

Full Name:

G antigen 2D

Calculated MW:

116 aa, 13 kDa

Observed MW:

18-22 kDa

Purification Method:

Antigen affinity purification

Recommended Dilutions:

WB 1:500-1:2000

IHC 1:20-1:200

IF/ICC 1:10-1:100

Applications

Tested Applications:

WB, IHC, IF/ICC, ELISA

Species Specificity:

human

Note-IHC: suggested antigen retrieval with TE buffer pH 9.0; (*) Alternatively, antigen retrieval may be performed with citrate buffer pH 6.0

Positive Controls:

WB : K-562 cells, HeLa cells, human testis tissue

IHC : human liver cancer tissue, human testis tissue

IF/ICC : HepG2 cells,

Background Information

GAGE2D, also named as GAGE8 and CT4.8, is expressed in testis and tumor tissues.

Storage

Storage:

Store at -20°C. Stable for one year after shipment.

Storage Buffer:

PBS with 0.02% sodium azide and 50% glycerol pH 7.3.

Aliquoting is unnecessary for -20°C storage

For technical support and original validation data for this product please contact:

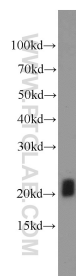
T: 4006900926

E: Proteintech-CN@ptglab.com

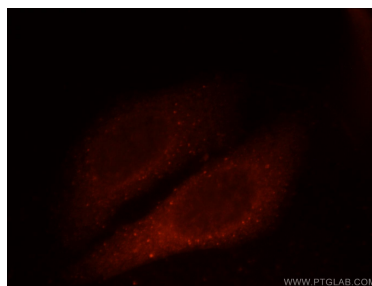
W: ptgcn.com

This product is exclusively available under Proteintech Group brand and is not available to purchase from any other manufacturer.

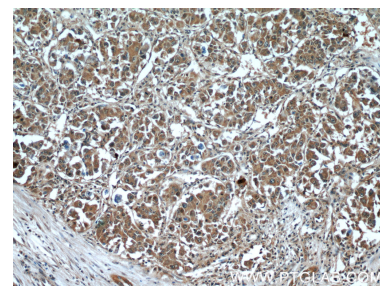
Selected Validation Data



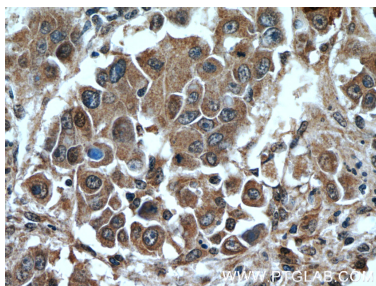
K-562 cells were subjected to SDS PAGE followed by western blot with 12532-1-AP (GAGE2D antibody) at dilution of 1:1000 incubated at room temperature for 1.5 hours.



Immunofluorescent analysis of HepG2 cells, using GAGE2D antibody 12532-1-AP at 1:25 dilution and Rhodamine-labeled goat anti-rabbit IgG (red).



Immunohistochemical analysis of paraffin-embedded human liver cancer tissue slide using 12532-1-AP (GAGE2D Antibody) at dilution of 1:50 (under 10x lens).



Immunohistochemical analysis of paraffin-embedded human liver cancer tissue slide using 12532-1-AP (GAGE2D Antibody) at dilution of 1:50 (under 40x lens).