

For Research Use Only

# SULT1E1 Polyclonal antibody

Catalog Number: 12522-1-AP

Featured Product

19 Publications



## Basic Information

### Catalog Number:

12522-1-AP

### Concentration:

900 µg/ml

### Source:

Rabbit

### Isotype:

IgG

### Immunogen Catalog Number:

AG3216

### GenBank Accession Number:

BC027956

### GeneID (NCBI):

6783

### UNIPROT ID:

P49888

### Full Name:

sulfotransferase family 1E, estrogen-preferring, member 1

### Calculated MW:

294 aa, 35 kDa

### Observed MW:

32-35 kDa

### Purification Method:

Antigen affinity purification

### Recommended Dilutions:

WB 1:500-1:1000

IP 0.5-4.0 µg for 1.0-3.0 mg of total protein lysate

IHC 1:50-1:500

## Applications

### Tested Applications:

WB, IP, IHC, ELISA

### Cited Applications:

WB, IHC, IF

### Species Specificity:

human, mouse, rat

### Cited Species:

human, mouse, rat

**Note-IHC: suggested antigen retrieval with TE buffer pH 9.0; (\*) Alternatively, antigen retrieval may be performed with citrate buffer pH 6.0**

### Positive Controls:

**WB**: human lung tissue, human adrenal gland tissue, human kidney tissue, human liver tissue, mouse kidney tissue

**IP**: mouse liver tissue,

**IHC**: human breast cancer tissue,

## Background Information

SULT1E1, also known as estrogen sulfotransferase, catalyzes the sulfation of endogenous estrogens as well as xenobiotic estrogen-like chemicals, converting them into the inactive form. SULT1E1 is a 33-35 kDa cytosolic protein that has been detected in human hepatic and nonhepatic tissues (17035602). SULT1E1 is expressed in breast and endometrial tissues, and some studies have investigated its implication in tumor development. Higher expression of SULT1E1 was observed in breast cancer tissues compared with normal breast tissues (22380844). This antibody detected a major band around 35 kD in lysates of mouse kidney, human liver and so on.

## Notable Publications

| Author               | Pubmed ID | Journal           | Application |
|----------------------|-----------|-------------------|-------------|
| Shuai Wang           | 28912067  | Biochem Pharmacol | WB          |
| Barbara Licznarska   | 27854074  | Mol Cell Biochem  | WB          |
| Anne C Silva Barbosa | 32424001  | J Am Soc Nephrol  | IHC         |

## Storage

### Storage:

Store at -20°C. Stable for one year after shipment.

### Storage Buffer:

PBS with 0.02% sodium azide and 50% glycerol pH 7.3.

Aliquoting is unnecessary for -20°C storage

For technical support and original validation data for this product please contact:

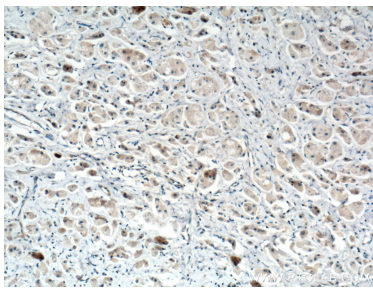
T: 4006900926

E: [Proteintech-CN@ptglab.com](mailto:Proteintech-CN@ptglab.com)

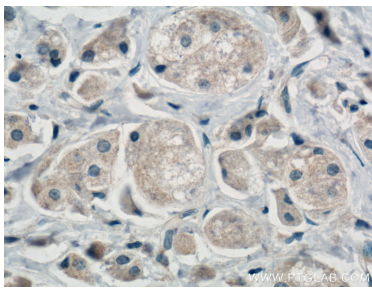
W: [ptgcn.com](http://ptgcn.com)

**This product is exclusively available under Proteintech Group brand and is not available to purchase from any other manufacturer.**

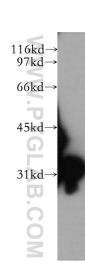
Selected Validation Data



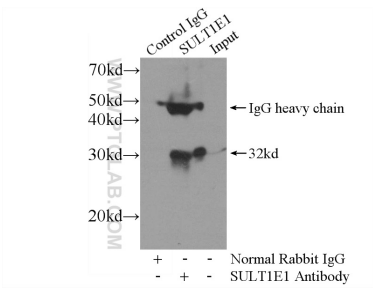
Immunohistochemical analysis of paraffin-embedded human breast cancer tissue slide using 12522-1-AP (SULT1E1 antibody) at dilution of 1:200 (under 10x lens. Heat mediated antigen retrieval with Tris-EDTA buffer (pH 9.0).



Immunohistochemical analysis of paraffin-embedded human breast cancer tissue slide using 12522-1-AP (SULT1E1 antibody) at dilution of 1:200 (under 40x lens. Heat mediated antigen retrieval with Tris-EDTA buffer (pH 9.0).



human lung tissue were subjected to SDS PAGE followed by western blot with 12522-1-AP (SULT1E1 antibody) at dilution of 1:500 incubated at room temperature for 1.5 hours.



IP result of anti-SULT1E1 (IP:12522-1-AP, 4ug; Detection:12522-1-AP 1:400) with mouse liver tissue lysate 4000ug.