

For Research Use Only

# SHC1 Polyclonal antibody, PBS Only

Catalog Number: 12496-1-PBS

Featured Product



## Basic Information

Catalog Number:

12496-1-PBS

Size:

1 mg/ml

Source:

Rabbit

Isotype:

IgG

Immunogen Catalog Number:

AG3165

GenBank Accession Number:

BC014158

GeneID (NCBI):

6464

UNIPROT ID:

P29353

Full Name:

SHC (Src homology 2 domain containing) transforming protein 1

Calculated MW:

66 kDa

Observed MW:

66 kDa, 52 kDa, 46 kDa

Purification Method:

Antigen affinity purification

## Applications

Tested Applications:

WB, IHC, IF/ICC, Indirect ELISA

Species Specificity:

human, mouse, rat

## Background Information

The proto-oncogene SHC family consists of SHCA, SHCB, SHCC, and SHCD4 gene members, which can encode 7 kinds of cohesive molecules. SHC family is widely expressed and functional. The SHC1 gene is located in zone 1, region 2 of human chromosome 1. SHC1 is believed to be involved in inhibiting neuronal apoptosis and regulating the receptor tyrosine kinase pathway. SHC1 sensitizes cancer cells to the 8-Cl-cAMP treatment.

## Storage

Storage:

Store at -80°C.

**The product is shipped with ice packs. Upon receipt, store it immediately at -80°C**

Storage Buffer:

PBS Only

For technical support and original validation data for this product please contact:

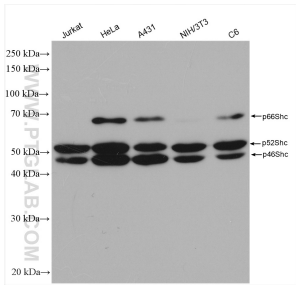
T: 4006900926

E: [Proteintech-CN@ptglab.com](mailto:Proteintech-CN@ptglab.com)

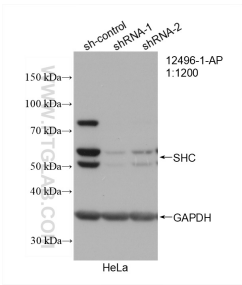
W: [ptgcn.com](http://ptgcn.com)

**This product is exclusively available under Proteintech Group brand and is not available to purchase from any other manufacturer.**

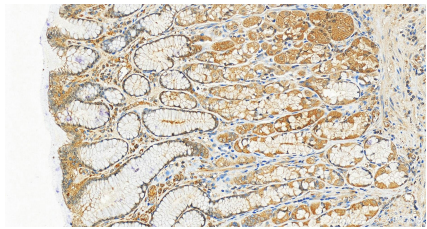
Selected Validation Data



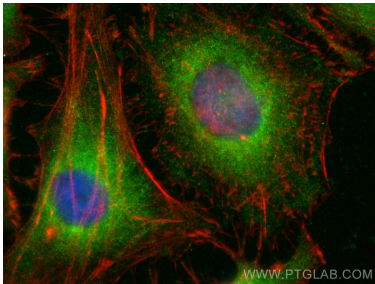
Various lysates were subjected to SDS PAGE followed by western blot with 12496-1-AP (SHC antibody) at dilution of 1:1000 incubated at room temperature for 1.5 hours. This data was developed using the same antibody clone with 12496-1-PBS in a different storage buffer formulation.



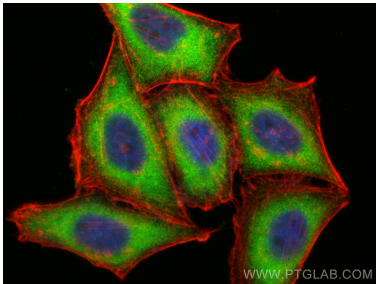
WB result of SHC antibody (12496-1-AP; 1:1200; incubated at room temperature for 1.5 hours) with sh-Control and sh-SHC transfected HeLa cells. This data was developed using the same antibody clone with 12496-1-PBS in a different storage buffer formulation.



Immunohistochemical analysis of paraffin-embedded human normal stomach slide using 12496-1-AP (SHC antibody) at dilution of 1:200 (under 20x lens). Heat mediated antigen retrieval with Tris-EDTA buffer (pH 9.0). This data was developed using the same antibody clone with 12496-1-PBS in a different storage buffer formulation.



Immunofluorescent analysis of (-20°C Ethanol) fixed HeLa cells using SHC antibody (12496-1-AP) at dilution of 1:200 and CoraLite®488-Conjugated AffiniPure Goat Anti-Rabbit IgG(H+L) (SA00013-2), CL594-phalloidin (red). This data was developed using the same antibody clone with 12496-1-PBS in a different storage buffer formulation.



Immunofluorescent analysis of (-20°C Ethanol) fixed HepG2 cells using SHC antibody (12496-1-AP) at dilution of 1:200 and CoraLite®488-Conjugated AffiniPure Goat Anti-Rabbit IgG(H+L) (SA00013-2), CL594-phalloidin (red). This data was developed using the same antibody clone with 12496-1-PBS in a different storage buffer formulation.