

For Research Use Only

# SHC Polyclonal antibody

Catalog Number: 12496-1-AP

Featured Product

2 Publications



## Basic Information

**Catalog Number:**

12496-1-AP

**Size:**

1000 µg/ml

**Source:**

Rabbit

**Isotype:**

IgG

**Immunogen Catalog Number:**

AG3165

**GenBank Accession Number:**

BC014158

**GeneID (NCBI):**

6464

**UNIPROT ID:**

P29353

**Full Name:**

SHC (Src homology 2 domain containing) transforming protein 1

**Calculated MW:**

66 kDa

**Observed MW:**

66 kDa, 52 kDa, 46 kDa

**Purification Method:**

Antigen affinity purification

**Recommended Dilutions:**

WB 1:500-1:2000

IF 1:10-1:100

## Applications

**Tested Applications:**

IF/ICC, WB, ELISA

**Cited Applications:**

WB, IF

**Species Specificity:**

human, mouse, rat

**Cited Species:**

human, mouse

**Positive Controls:**

WB : Jurkat cells, HeLa cells, A431 cells, C6 cells, NIH/3T3 cells

IF : HepG2 cells,

## Background Information

The proto-oncogene SHC family consists of SHCA, SHCB, SHCC, and SHCD4 gene members, which can encode 7 kinds of cohesive molecules. SHC family is widely expressed and functional. The SHC1 gene is located in zone 1, region 2 of human chromosome 1. SHC1 is believed to be involved in inhibiting neuronal apoptosis and regulating the receptor tyrosine kinase pathway. SHC1 sensitizes cancer cells to the 8-Cl-cAMP treatment.

## Notable Publications

Author	Pubmed ID	Journal	Application
Hao-Ke Li	32841643	Exp Cell Res	WB
Qiwei Jiang	37294756	Sci Adv	WB,IF

## Storage

**Storage:**

Store at -20°C. Stable for one year after shipment.

**Storage Buffer:**

PBS with 0.02% sodium azide and 50% glycerol pH 7.3.

Aliquoting is unnecessary for -20°C storage

For technical support and original validation data for this product please contact:

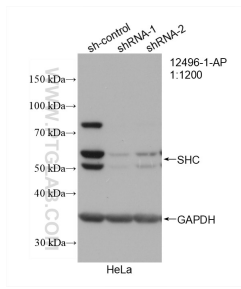
T: 4006900926

E: Proteintech-CN@ptglab.com

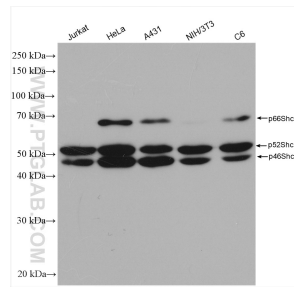
W: ptgcn.com

This product is exclusively available under Proteintech Group brand and is not available to purchase from any other manufacturer.

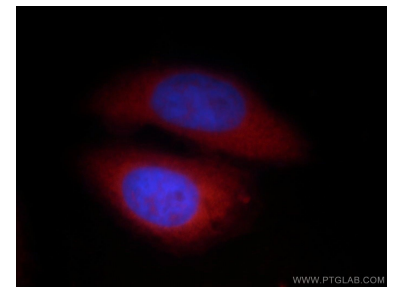
## Selected Validation Data



WB result of SHC antibody (12496-1-AP; 1:1200; incubated at room temperature for 1.5 hours) with sh-Control and sh-SHC transfected HeLa cells.



Various lysates were subjected to SDS PAGE followed by western blot with 12496-1-AP (SHC antibody) at dilution of 1:1000 incubated at room temperature for 1.5 hours.



Immunofluorescent analysis of HepG2 cells, using SHC1 antibody 12496-1-AP at 1:25 dilution and Rhodamine-labeled goat anti-rabbit IgG (red). Blue pseudocolor = DAPI (fluorescent DNA dye).