

For Research Use Only

Ephrin A3 Polyclonal antibody

Catalog Number: 12480-1-AP

Featured Product

7 Publications



Basic Information

Catalog Number:

12480-1-AP

Source:

Rabbit

Isotype:

IgG

Immunogen Catalog Number:

AG3188

GenBank Accession Number:

BC017722

GeneID (NCBI):

1944

UNIPROT ID:

P52797

Full Name:

ephrin-A3

Calculated MW:

238 aa, 26 kDa

Observed MW:

26-35 kDa

Purification Method:

Antigen affinity purification

Recommended Dilutions:

WB: 1:500-1:2000

IP: 0.5-4.0 ug for 1.0-3.0 mg of total protein lysate

IHC: 1:20-1:200

IF-P: 1:50-1:500

Applications

Tested Applications:

WB, IHC, IF-P, IP, ELISA

Cited Applications:

WB, IF

Species Specificity:

human, mouse, rat

Cited Species:

human, rat

Note-IHC: suggested antigen retrieval with TE buffer pH 9.0; (*) Alternatively, antigen retrieval may be performed with citrate buffer pH 6.0

Positive Controls:

WB : mouse brain tissue, human brain tissue, rat brain tissue

IP : A549 cells,

IHC : human skeletal muscle tissue,

IF-P : mouse spleen tissue,

Background Information

Notable Publications

Author	Pubmed ID	Journal	Application
Ruzetuohti Yiminniyaze	35770949	Cancer Med	WB
Hui Wang	32695810	Biomed Res Int	WB
Tomoki Maekawa	32603314	JCI Insight	

Storage

Storage:

Store at -20°C. Stable for one year after shipment.

Storage Buffer:

PBS with 0.02% sodium azide and 50% glycerol, pH7.3

Aliquoting is unnecessary for -20°C storage

For technical support and original validation data for this product please contact:

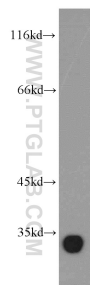
T: 4006900926

E: Proteintech-CN@ptglab.com

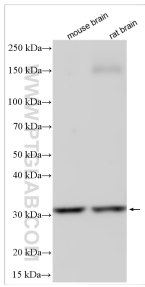
W: ptgcn.com

This product is exclusively available under Proteintech Group brand and is not available to purchase from any other manufacturer.

Selected Validation Data



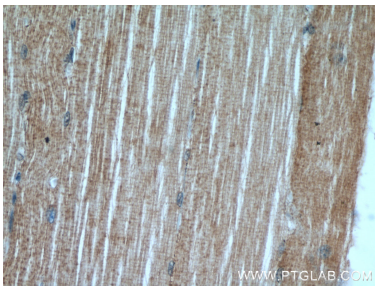
human brain tissue were subjected to SDS PAGE followed by western blot with 12480-1-AP (Ephrin A3 antibody) at dilution of 1:400 incubated at room temperature for 1.5 hours.



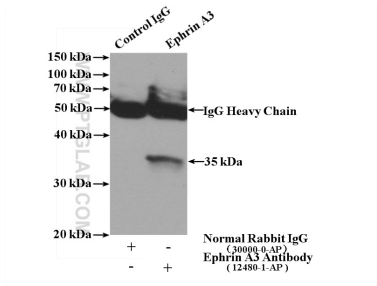
Various lysates were subjected to SDS PAGE followed by western blot with 12480-1-AP (Ephrin A3 antibody) at dilution of 1:1000 incubated at room temperature for 1.5 hours.



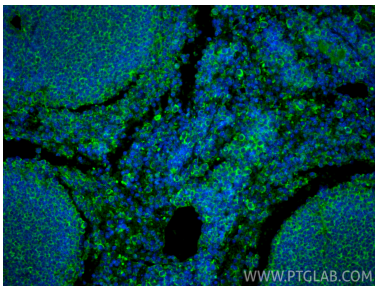
Immunohistochemical analysis of paraffin-embedded human skeletal muscle using 12480-1-AP (Ephrin A3 antibody) at dilution of 1:50 (under 10x lens).



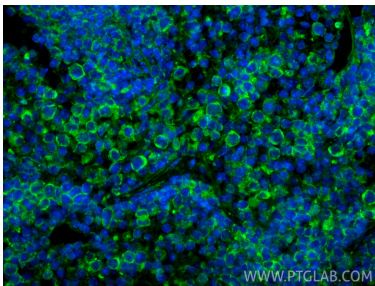
Immunohistochemical analysis of paraffin-embedded human skeletal muscle using 12480-1-AP (Ephrin A3 antibody) at dilution of 1:50 (under 40x lens).



IP result of anti-Ephrin A3 (IP:12480-1-AP, 4ug; Detection:12480-1-AP 1:500) with A549 cells lysate 1040ug.



Immunofluorescent analysis of (4% PFA) fixed paraffin-embedded mouse spleen tissue using Ephrin A3 antibody (12480-1-AP) at dilution of 1:200 and CoraLite®488-Conjugated Goat Anti-Rabbit IgG(H+L) (SA00013-2). Heat mediated antigen retrieval with Tris-EDTA buffer (pH 9.0).



Immunofluorescent analysis of (4% PFA) fixed paraffin-embedded mouse spleen tissue using Ephrin A3 antibody (12480-1-AP) at dilution of 1:200 and CoraLite®488-Conjugated Goat Anti-Rabbit IgG(H+L) (SA00013-2). Heat mediated antigen retrieval with Tris-EDTA buffer (pH 9.0).