

For Research Use Only

CDCA8 Polyclonal antibody

Catalog Number: 12465-1-AP **7 Publications**



Basic Information

Catalog Number: 12465-1-AP	GenBank Accession Number: BC016944	Purification Method: Antigen affinity purification
Size: 450 µg/ml	GeneID (NCBI): 55143	Recommended Dilutions: WB 1:500-1:1000 IHC 1:50-1:500 IF 1:50-1:500
Source: Rabbit	UNIPROT ID: Q53HL2	
Isotype: IgG	Full Name: cell division cycle associated 8	
Immunogen Catalog Number: AG3136	Calculated MW: 280 aa, 31 kDa	
	Observed MW: 31-38 kDa	

Applications

Tested Applications: IF/ICC, IHC, WB, ELISA	Positive Controls: WB : A549 cells, mouse kidney tissue IHC : human lung cancer tissue, IF : HeLa cells,
Cited Applications: WB, IF, IHC	
Species Specificity: human, mouse, rat	
Cited Species: human, mouse	
Note-IHC: suggested antigen retrieval with TE buffer pH 9.0; (*) Alternatively, antigen retrieval may be performed with citrate buffer pH 6.0	

Background Information

CDCA8, also named as Borealin, Dasra-B and PESCRG3, is a component of the chromosomal passenger complex (CPC), a complex that acts as a key regulator of mitosis. This protein can be migrated to 35-40 kDa with phosphor modification or ~50 kDa with SUMO modification.

Notable Publications

Author	Pubmed ID	Journal	Application
Xiao-Han Cui	34741389	J Cell Mol Med	WB,IHC
Jeremy G Carlton	22422861	Science	IF
Haojie Li	35930080	Cell Mol Life Sci	WB

Storage

Storage:
Store at -20°C. Stable for one year after shipment.
Storage Buffer:
PBS with 0.02% sodium azide and 50% glycerol pH 7.3.
Aliquoting is unnecessary for -20°C storage

For technical support and original validation data for this product please contact:

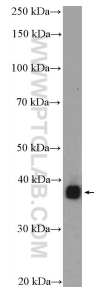
T: 4006900926

E: Proteintech-CN@ptglab.com

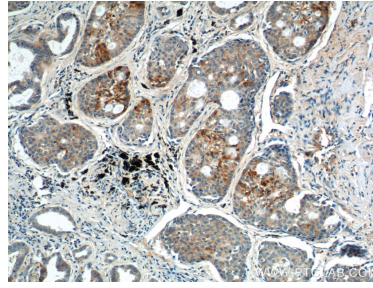
W: ptgcn.com

This product is exclusively available under Proteintech Group brand and is not available to purchase from any other manufacturer.

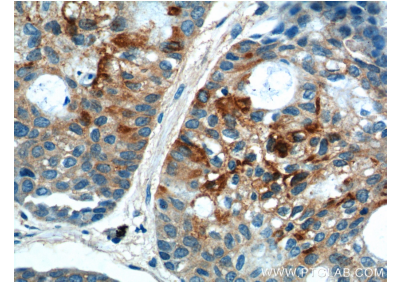
Selected Validation Data



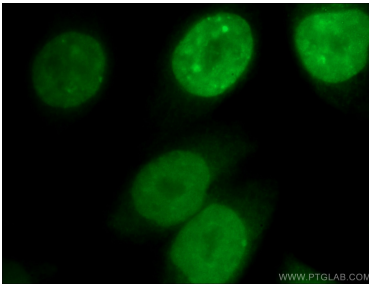
A549 cells were subjected to SDS PAGE followed by western blot with 12465-1-AP (CDCA8 Antibody) at dilution of 1:600 incubated at room temperature for 1.5 hours.



Immunohistochemical analysis of paraffin-embedded human lung cancer tissue slide using 12465-1-AP (CDCA8 Antibody) at dilution of 1:200 (under 10x lens).



Immunohistochemical analysis of paraffin-embedded human lung cancer tissue slide using 12465-1-AP (CDCA8 Antibody) at dilution of 1:200 (under 40x lens).



Immunofluorescent analysis of (4% PFA) fixed HeLa cells using 12465-1-AP (CDCA8 antibody) at dilution of 1:50 and Alexa Fluor 488-Conjugated AffiniPure Goat Anti-Rabbit IgG(H+L).