

For Research Use Only

# CREST Polyclonal antibody, PBS Only

Catalog Number: 12439-1-PBS

Featured Product



## Basic Information

Catalog Number:

12439-1-PBS

Source:

Rabbit

Isotype:

IgG

Immunogen Catalog Number:

AG3119

GenBank Accession Number:

BC034494

GeneID (NCBI):

26039

UNIPROT ID:

O75177

Full Name:

synovial sarcoma translocation gene  
on chromosome 18-like 1

Calculated MW:

396 aa, 43 kDa

Observed MW:

55 kDa

Purification Method:

Antigen affinity purification

## Applications

Tested Applications:

WB, IHC, IF/ICC, IF-P, IP, ELISA

Species Specificity:

human, mouse, rat

## Background Information

CREST, also named as SS18-like 1 (SS18L1) is a transcriptional activator that is required for calcium-dependent dendritic growth and branching in cortical neurons. It's also a nuclear protein interacts with CREB-binding protein and expressed in the developing brain. It helps regulate neuronal morphogenesis in calcium-dependent manner. The N-terminal domain of SS18L1 is required for suppressing transactivation in the basal state, while the C-terminal domain is required for calcium-induced transactivation. It's part of the CREST-BRG1 complex, a multiprotein complex that regulates promoter activation by orchestrating a calcium-dependent release of a repressor complex and a recruitment of an activator complex. This complex also binds to the NR2B promoter, and activity-dependent induction of NR2B expression involves a release of HDAC1 and recruitment of CREBBP. The calculated molecular weight of CREST is about 43 kDa, but the modified of CREST protein is 55 kDa (PMID: 25888396). CREST exists some isoforms with calculated MV 43, 40, 33 and 29 kDa.

## Storage

Storage:

Store at -80°C.

The product is shipped with ice packs. Upon receipt, store it immediately at -80°C

Storage Buffer:

PBS only, pH7.3

For technical support and original validation data for this product please contact:

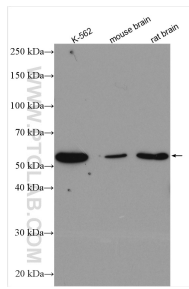
T: 4006900926

E: [Proteintech-CN@ptglab.com](mailto:Proteintech-CN@ptglab.com)

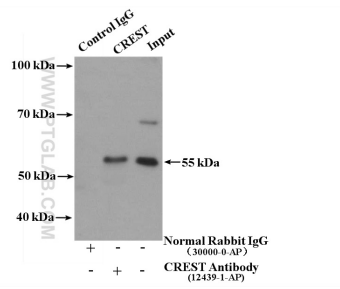
W: [ptgcn.com](http://ptgcn.com)

This product is exclusively available under Proteintech Group brand and is not available to purchase from any other manufacturer.

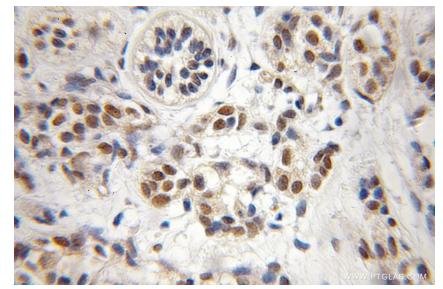
## Selected Validation Data



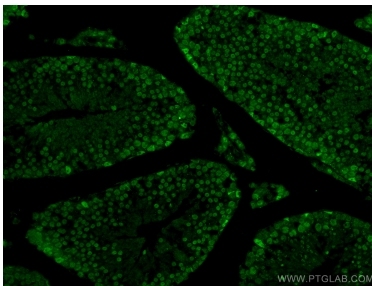
Various lysates were subjected to SDS PAGE followed by western blot with 12439-1-AP (CREST antibody) at dilution of 1:3000 incubated at room temperature for 1.5 hours. This data was developed using the same antibody clone with 12439-1-PBS in a different storage buffer formulation.



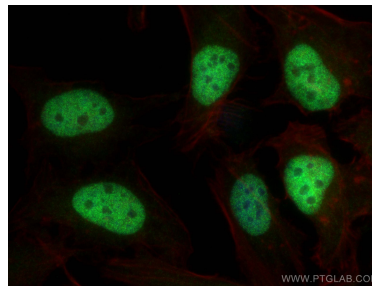
IP result of anti-CREST (IP:12439-1-AP, 4ug; Detection:12439-1-AP 1:300) with HeLa cells lysate 3000 ug. This data was developed using the same antibody clone with 12439-1-PBS in a different storage buffer formulation.



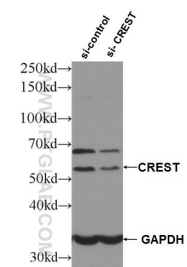
Immunohistochemical analysis of paraffin-embedded human breast cancer using 12439-1-AP (CREST antibody) at dilution of 1:50 (under 10x lens). This data was developed using the same antibody clone with 12439-1-PBS in a different storage buffer formulation.



Immunofluorescent analysis of (4% PFA) fixed mouse testis tissue using 12439-1-AP (CREST antibody) at dilution of 1:100 and CoraLite488-Conjugated AffiniPure Goat Anti-Rabbit IgG(H+L). This data was developed using the same antibody clone with 12439-1-PBS in a different storage buffer formulation.



Immunofluorescent analysis of (4% PFA) fixed HeLa cells using CREST antibody (12439-1-AP) at dilution of 1:800 and CoraLite@488-Conjugated AffiniPure Goat Anti-Rabbit IgG(H+L), (CL594-Phalloidin, red). This data was developed using the same antibody clone with 12439-1-PBS in a different storage buffer formulation.



WB result of CREST antibody (12439-1-AP; 1:4000; incubated at room temperature for 1.5 hours) with sh-Control and sh-CREST transfected HeLa cells. This data was developed using the same antibody clone with 12439-1-PBS in a different storage buffer formulation.