

For Research Use Only

# GSTM1 Polyclonal antibody

Catalog Number: 12412-1-AP

Featured Product

21 Publications



## Basic Information

**Catalog Number:**

12412-1-AP

**Size:**

300 µg/ml

**Source:**

Rabbit

**Isotype:**

IgG

**Immunogen Catalog Number:**

AG3113

**GenBank Accession Number:**

BC024005

**GeneID (NCBI):**

2944

**UNIPROT ID:**

P09488

**Full Name:**

glutathione S-transferase mu 1

**Calculated MW:**

181 aa, 21 kDa

**Observed MW:**

27 kDa

**Purification Method:**

Antigen affinity purification

**Recommended Dilutions:**

WB 1:1000-1:4000

IHC 1:50-1:500

IF 1:50-1:500

## Applications

**Tested Applications:**

IF/ICC, IHC, WB, ELISA

**Cited Applications:**

IF, IHC, WB

**Species Specificity:**

human, mouse, rat

**Cited Species:**

human, mouse

**Note-IHC: suggested antigen retrieval with TE buffer pH 9.0; (\*) Alternatively, antigen retrieval may be performed with citrate buffer pH 6.0**

**Positive Controls:**

WB : mouse liver tissue, mouse ovary tissue, HeLa cells, mouse kidney tissue, rat liver

IHC : mouse liver tissue, human gliomas tissue

IF : HeLa cells,

## Background Information

### Notable Publications

| Author        | Pubmed ID | Journal         | Application |
|---------------|-----------|-----------------|-------------|
| Haibo Zhang   | 34671938  | Reprod Sci      | IHC         |
| Peipei Li     | 35621716  | FASEB J         | WB          |
| Yin Dongliang | 35580023  | J Med Microbiol | WB          |

## Storage

**Storage:**

Store at -20°C. Stable for one year after shipment.

**Storage Buffer:**

PBS with 0.02% sodium azide and 50% glycerol pH 7.3.

Aliquoting is unnecessary for -20°C storage

For technical support and original validation data for this product please contact:

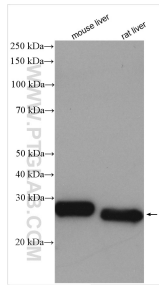
T: 4006900926

E: Proteintech-CN@ptglab.com

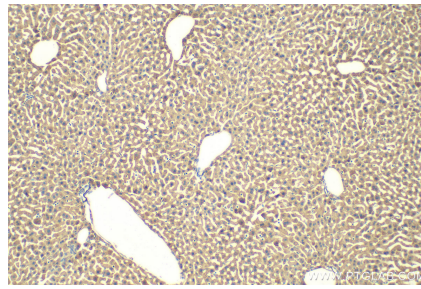
W: ptgcn.com

**This product is exclusively available under Proteintech Group brand and is not available to purchase from any other manufacturer.**

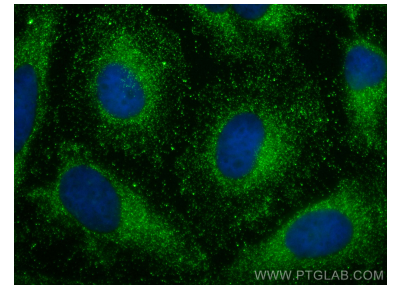
## Selected Validation Data



Various lysates were subjected to SDS PAGE followed by western blot with 12412-1-AP (GSTM1 antibody) at dilution of 1:2000 incubated at room temperature for 1.5 hours.



Immunohistochemical analysis of paraffin-embedded mouse liver tissue slide using 12412-1-AP (GSTM1 antibody) at dilution of 1:200 (under 10x lens). Heat mediated antigen retrieval with Tris-EDTA buffer (pH 9.0).



Immunofluorescent analysis of (-20°C Methanol) fixed HeLa cells using GSTM1 antibody (12412-1-AP) at dilution of 1:200 and CoraLite®488-Conjugated AffiniPure Goat Anti-Rabbit IgG(H+L).