

BEX1/2 Polyclonal antibody

Catalog Number: 12390-1-AP

5 Publications

Basic Information

Catalog Number:

12390-1-AP

Size:

500 µg/ml

Source:

Rabbit

Isotype:

IgG

Immunogen Catalog Number:

AG3066

GenBank Accession Number:

BC015522

GeneID (NCBI):

84707

UNIPROT ID:

Q9BXY8

Full Name:

brain expressed X-linked 2

Calculated MW:

128 aa, 15 kDa

Observed MW:

10-15 kDa

Purification Method:

Antigen affinity purification

Recommended Dilutions:

WB 1:500-1:1000

IHC 1:20-1:200

Applications

Tested Applications:

IHC, WB, ELISA

Cited Applications:

WB, IF, IHC

Species Specificity:

human

Cited Species:

human, mouse

Note-IHC: suggested antigen retrieval with TE buffer pH 9.0; (*) Alternatively, antigen retrieval may be performed with citrate buffer pH 6.0

Positive Controls:

WB : human brain tissue,

IHC : human medulloblastoma tissue,

Background Information

BEX1 is a signaling adapter molecule involved in p75NTR/NGFR signaling. It lays a role in cell cycle progression and neuronal differentiation. BEX1 inhibits neuronal differentiation in response to nerve growth factor (NGF). BEX2 is a regulator of mitochondrial apoptosis and G1 cell cycle in breast cancer. It regulates the level of PP2A regulatory subunit B and PP2A phosphatase activity. The homology between human BEX1 and BEX2 is 94%. This antibody detects both BEX1 and BEX2.

Notable Publications

Author	Pubmed ID	Journal	Application
Yeting Hu	28367093	Int J Biol Sci	WB
Emi Hibino	35144600	BMC Biol	IF
Xiaocheng Guo	38814177	Aging (Albany NY)	WB

Storage

Storage:

Store at -20°C. Stable for one year after shipment.

Storage Buffer:

PBS with 0.02% sodium azide and 50% glycerol pH 7.3.

Aliquoting is unnecessary for -20°C storage

For technical support and original validation data for this product please contact:

T: 4006900926

E: Proteintech-CN@ptglab.com

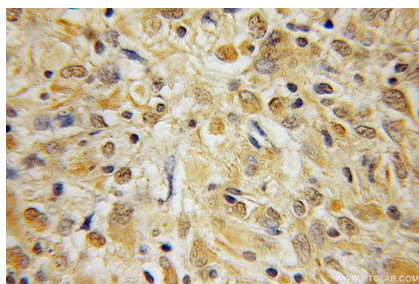
W: ptgcn.com

This product is exclusively available under Proteintech Group brand and is not available to purchase from any other manufacturer.

Selected Validation Data



human brain tissue were subjected to SDS PAGE followed by western blot with 12390-1-AP (BEX1/2 antibody) at dilution of 1:500 incubated at room temperature for 1.5 hours.



Immunohistochemical analysis of paraffin-embedded human medulloblastoma using 12390-1-AP (BEX1/2 antibody) at dilution of 1:100 (under 10x lens).