

DPH2 Polyclonal antibody

Catalog Number: 12367-1-AP

Basic Information

Catalog Number:

12367-1-AP

Size:

500 µg/ml

Source:

Rabbit

Isotype:

IgG

Immunogen Catalog Number:

AG3042

GenBank Accession Number:

BC016956

GeneID (NCBI):

1802

UNIPROT ID:

Q9BQC3

Full Name:

DPH2 homolog (S. cerevisiae)

Calculated MW:

489 aa, 52 kDa

Observed MW:

52 kDa

Purification Method:

Antigen affinity purification

Recommended Dilutions:

WB 1:1000-1:8000

IP 0.5-4.0 µg for 1.0-3.0 mg of total protein lysate

IHC 1:20-1:200

IF/ICC 1:10-1:100

Applications

Tested Applications:

WB, IHC, IF/ICC, IP, ELISA

Species Specificity:

human, mouse

Note-IHC: suggested antigen retrieval with **TE buffer pH 9.0; (*)** Alternatively, antigen retrieval may be performed with **citrate buffer pH 6.0**

Positive Controls:

WB: COLO 320 cells, human brain tissue, PC-3 cells

IP: mouse skeletal muscle tissue,

IHC: human colon cancer tissue,

IF/ICC: PC-3 cells,

Background Information

Required for the first step in the synthesis of diphthamide, a post-translational modification of histidine which occurs in translation elongation factor 2 (EEF2). When overexpressed, suppresses colony formation ability and growth rate of ovarian cancer cells. Mutants of the DPH1, DPH2, and DPH5 (611075) genes, involved in diphthamide biosynthesis, were identified as resistant to both anthrax toxin and diphtheria toxin. This antibody works well in WB, IP, IHC and IF application.

Storage

Storage:

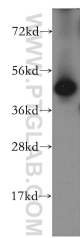
Store at -20°C. Stable for one year after shipment.

Storage Buffer:

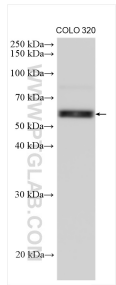
PBS with 0.02% sodium azide and 50% glycerol pH 7.3.

Aliquoting is unnecessary for -20°C storage

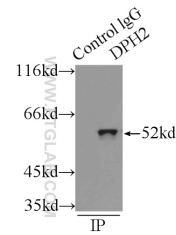
Selected Validation Data



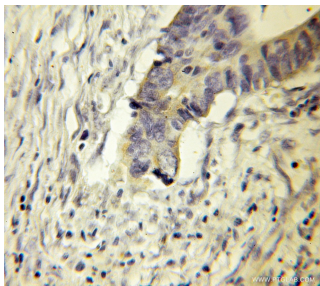
human brain tissue were subjected to SDS PAGE followed by western blot with 12367-1-AP (DPH2 antibody) at dilution of 1:400 incubated at room temperature for 1.5 hours.



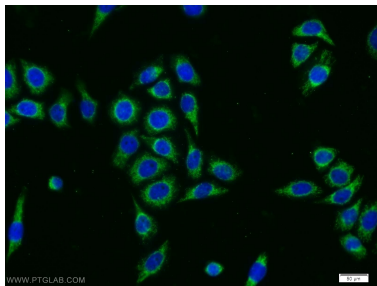
COLO 320 cells were subjected to SDS PAGE followed by western blot with 12367-1-AP (DPH2 antibody) at dilution of 1:4000 incubated at room temperature for 1.5 hours.



IP result of anti-DPH2 (IP:12367-1-AP, 3ug; Detection:12367-1-AP 1:1000) with mouse skeletal muscle tissue lysate 6000ug.



Immunohistochemical analysis of paraffin-embedded human colon cancer using 12367-1-AP (DPH2 antibody) at dilution of 1:50 (under 10x lens).



Immunofluorescent analysis of PC-3 cells using 12367-1-AP (DPH2 antibody) at dilution of 1:25 and Alexa Fluor 488-conjugated AffiniPure Goat Anti-Rabbit IgG(H+L).