

For Research Use Only

KPNA6 Polyclonal antibody

Catalog Number: 12366-2-AP **3 Publications**



Basic Information

Catalog Number: 12366-2-AP	GenBank Accession Number: BC020520	Purification Method: Antigen affinity purification
Size: 260 µg/ml	GeneID (NCBI): 23633	Recommended Dilutions: WB 1:500-1:2000 IHC 1:50-1:500
Source: Rabbit	UNIPROT ID: O60684	
Isotype: IgG	Full Name: karyopherin alpha 6 (importin alpha 7)	
Immunogen Catalog Number: AG3040	Calculated MW: 536 aa, 60 kDa	
	Observed MW: 55-60 kDa	

Applications

Tested Applications: IHC, WB, ELISA	Positive Controls: WB: BxPC-3 cells, HeLa cells
Cited Applications: WB	IHC: human breast cancer tissue, human prostate cancer tissue
Species Specificity: human	
Cited Species: human	

Note-IHC: suggested antigen retrieval with TE buffer pH 9.0; (*) Alternatively, antigen retrieval may be performed with citrate buffer pH 6.0

Background Information

Notable Publications

Author	Pubmed ID	Journal	Application
Sergi Marco	34819513	Nat Commun	WB
Anna Nakanishi	36366568	Viruses	WB
Yisha Zhuo	33141406	Viol Sin	WB

Storage

Storage:
Store at -20°C. Stable for one year after shipment.
Storage Buffer:
PBS with 0.02% sodium azide and 50% glycerol pH 7.3.
Aliquoting is unnecessary for -20°C storage

For technical support and original validation data for this product please contact:

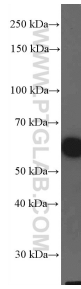
T: 4006900926

E: Proteintech-CN@ptglab.com

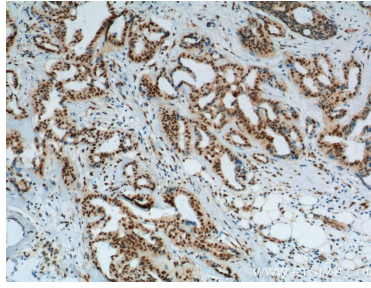
W: ptgcn.com

This product is exclusively available under Proteintech Group brand and is not available to purchase from any other manufacturer.

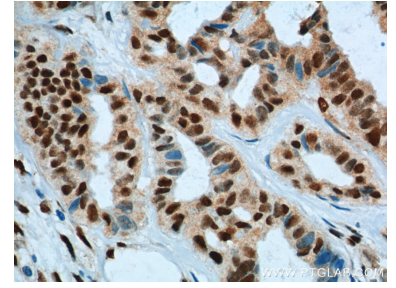
Selected Validation Data



BxPC-3 cells were subjected to SDS PAGE followed by western blot with 12366-2-AP (KPNA6 Antibody) at dilution of 1:1000 incubated at room temperature for 1.5 hours.



Immunohistochemical analysis of paraffin-embedded human breast cancer tissue slide using 12366-2-AP (KPNA6 Antibody) at dilution of 1:200 (under 10x lens). Heat mediated antigen retrieval with Tris-EDTA buffer (pH 9.0).



Immunohistochemical analysis of paraffin-embedded human breast cancer tissue slide using 12366-2-AP (KPNA6 Antibody) at dilution of 1:200 (under 40x lens). Heat mediated antigen retrieval with Tris-EDTA buffer (pH 9.0).