

For Research Use Only

# SYTL2 Polyclonal antibody

Catalog Number: 12359-1-AP

Featured Product

2 Publications



## Basic Information

**Catalog Number:**

12359-1-AP

**Size:**

600 µg/ml

**Source:**

Rabbit

**Isotype:**

IgG

**Immunogen Catalog Number:**

AG3023

**GenBank Accession Number:**

BC015540

**GeneID (NCBI):**

54843

**UNIPROT ID:**

Q9HCH5

**Full Name:**

synaptotagmin-like 2

**Calculated MW:**

934 aa, 105 kDa

**Observed MW:**

39 kDa, 100-105 kDa

**Purification Method:**

Antigen affinity purification

**Recommended Dilutions:**

WB 1:500-1:3000

IHC 1:500-1:2000

## Applications

**Tested Applications:**

IHC, WB, ELISA

**Cited Applications:**

WB, IHC

**Species Specificity:**

human, mouse, rat

**Cited Species:**

human

**Note-IHC: suggested antigen retrieval with TE buffer pH 9.0; (\*) Alternatively, antigen retrieval may be performed with citrate buffer pH 6.0**

**Positive Controls:**

WB : A549 cells, Jurkat cells, MCF-7 cells

IHC : human breast cancer tissue,

## Background Information

Synaptotagmin-like 2 (SYTL2) is a synaptotagmin-like protein (SLP) that belongs to a C2 domain-containing protein family. SYTL2 contains an N-terminal Slp homology domain (SHD), Rab-binding region, and C-terminal tandem C2 domains, C2A and C2B (PMID: 11327731). It interacts with RAB27A and plays a role in promoting docking of RAB27-bound organelles to the plasma membrane (PMID: 17052176). Alternative splicing of SYTL2 gene results in multiple transcript variants encoding distinct isoforms with calculated molecular weights ranging from 39 kDa to 142 kDa.

## Notable Publications

| Author      | Pubmed ID | Journal              | Application |
|-------------|-----------|----------------------|-------------|
| Xi Chen     | 36482876  | J Extracell Vesicles | WB          |
| Miwa Tanaka | 37029109  | Nat Commun           | IHC         |

## Storage

**Storage:**

Store at -20°C. Stable for one year after shipment.

**Storage Buffer:**

PBS with 0.02% sodium azide and 50% glycerol pH 7.3.

Aliquoting is unnecessary for -20°C storage

For technical support and original validation data for this product please contact:

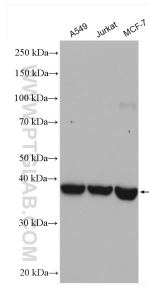
T: 4006900926

E: Proteintech-CN@ptglab.com

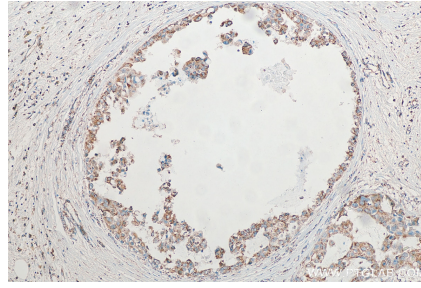
W: ptgcn.com

This product is exclusively available under Proteintech Group brand and is not available to purchase from any other manufacturer.

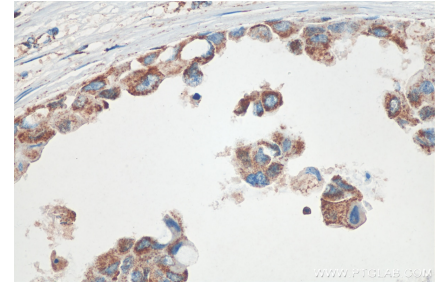
## Selected Validation Data



Various lysates were subjected to SDS PAGE followed by western blot with 12359-1-AP (SYTL2 antibody) at dilution of 1:1500 incubated at room temperature for 1.5 hours.



Immunohistochemical analysis of paraffin-embedded human breast cancer tissue slide using 12359-1-AP (SYTL2 antibody) at dilution of 1:1000 (under 10x lens). Heat mediated antigen retrieval with Tris-EDTA buffer (pH 9.0).



Immunohistochemical analysis of paraffin-embedded human breast cancer tissue slide using 12359-1-AP (SYTL2 antibody) at dilution of 1:1000 (under 40x lens). Heat mediated antigen retrieval with Tris-EDTA buffer (pH 9.0).