

For Research Use Only

# MRRF Polyclonal antibody

Catalog Number: 12357-2-AP

5 Publications



## Basic Information

Catalog Number:

12357-2-AP

Concentration:

700 ug/ml

Source:

Rabbit

Isotype:

IgG

Immunogen Catalog Number:

AG3021

GenBank Accession Number:

BC013049

GeneID (NCBI):

92399

UNIPROT ID:

Q96E11

Full Name:

mitochondrial ribosome recycling

factor

Calculated MW:

262 aa, 29 kDa

Observed MW:

25 kDa

Purification Method:

Antigen affinity purification

Recommended Dilutions:

WB 1:2000-1:10000

IHC 1:20-1:200

## Applications

Tested Applications:

WB, IHC, ELISA

Cited Applications:

WB

Species Specificity:

human

Cited Species:

mouse, rat

Positive Controls:

WB : HEK-293 cells, A431 cells, HeLa cells, HepG2 cells

IHC : human pancreas cancer tissue,

**Note-IHC: suggested antigen retrieval with *TE buffer pH 9.0*; (\*) Alternatively, antigen retrieval may be performed with *citrate buffer pH 6.0***

## Background Information

### Notable Publications

Author	Pubmed ID	Journal	Application
Ying Shu	36314841	EMBO J	
Takumi Yokokawa	32446358	Biochem Biophys Res Commun	WB
Zhiyuan Tian	38677116	J Hazard Mater	WB

## Storage

Storage:

Store at -20°C. Stable for one year after shipment.

Storage Buffer:

PBS with 0.02% sodium azide and 50% glycerol pH 7.3.

Aliquoting is unnecessary for -20°C storage

For technical support and original validation data for this product please contact:

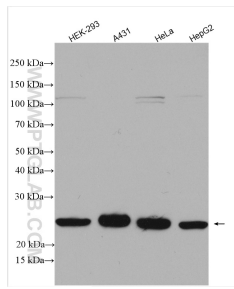
T: 4006900926

E: [Proteintech-CN@ptglab.com](mailto:Proteintech-CN@ptglab.com)

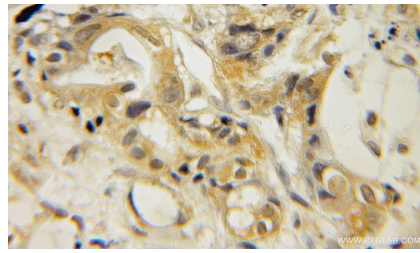
W: [ptgcn.com](http://ptgcn.com)

This product is exclusively available under Proteintech Group brand and is not available to purchase from any other manufacturer.

## Selected Validation Data



Various lysates were subjected to SDS PAGE followed by western blot with 12357-2-AP (MRRF antibody) at dilution of 1:5000 incubated at room temperature for 1.5 hours.



Immunohistochemical analysis of paraffin-embedded human pancreas cancer using 12357-2-AP (MRRF antibody) at dilution of 1:50 (under 10x lens).