

For Research Use Only

# ESM1 Polyclonal antibody, PBS Only

Catalog Number:12355-1-PBS



## Basic Information

Catalog Number:

12355-1-PBS

Concentration:

1 mg/ml

Source:

Rabbit

Isotype:

IgG

Immunogen Catalog Number:

AG3019

GenBank Accession Number:

BC011989

GeneID (NCBI):

11082

UNIPROT ID:

Q9NQ30

Full Name:

endothelial cell-specific molecule 1

Calculated MW:

184 aa, 20 kDa

Observed MW:

14 kDa

Purification Method:

Antigen affinity purification

## Applications

Tested Applications:

WB, IP, Indirect ELISA

Species Specificity:

human

## Background Information

ESM1 is a secreted protein mainly expressed in the endothelial cells. The deduced 184-amino acid protein is cysteine rich with an N-terminal hydrophobic signal sequence. Expression of ESM1 was tested by Northern blot analysis and RT-PCR and was found to be constitutive in a HUVEC cell line, but not in any other cell line tested. Constitutive ESM1 expression in human tissue was restricted to lung.

## Storage

Storage:

Store at -80°C.

**The product is shipped with ice packs. Upon receipt, store it immediately at -80°C**

Storage Buffer:

PBS only, pH7.3

For technical support and original validation data for this product please contact:

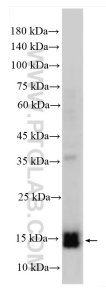
T: 4006900926

E: [Proteintech-CN@ptglab.com](mailto:Proteintech-CN@ptglab.com)

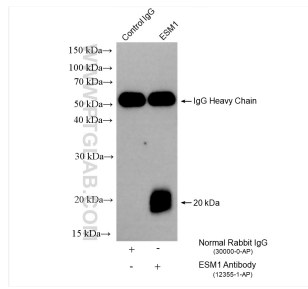
W: [ptgcn.com](http://ptgcn.com)

**This product is exclusively available under Proteintech Group brand and is not available to purchase from any other manufacturer.**

## Selected Validation Data



HUVEC cells were subjected to SDS PAGE followed by western blot with 12355-1-AP (ESM1 antibody) at dilution of 1:300 incubated at room temperature for 1.5 hours. This data was developed using the same antibody clone with 12355-1-PBS in a different storage buffer formulation.



IP result of anti-ESM1 (IP:12355-1-AP, 4ug; Detection:12355-1-AP 1:300) with HUVEC cells lysate 640 ug. This data was developed using the same antibody clone with 12355-1-PBS in a different storage buffer formulation.