

For Research Use Only

ESM1 Polyclonal antibody

Catalog Number: 12355-1-AP



Basic Information

Catalog Number:

12355-1-AP

Size:

350 ug/ml

Source:

Rabbit

Isotype:

IgG

Immunogen Catalog Number:

AG3019

GenBank Accession Number:

BC011989

GeneID (NCBI):

11082

UNIPROT ID:

Q9NQ30

Full Name:

endothelial cell-specific molecule 1

Calculated MW:

184 aa, 20 kDa

Observed MW:

20 kDa

Purification Method:

Antigen affinity purification

Recommended Dilutions:

WB 1:200-1:1000

IP 0.5-4.0 ug for 1.0-3.0 mg of total protein lysate

Applications

Tested Applications:

WB, IP, ELISA

Species Specificity:

human

Positive Controls:

WB : HUVEC cells,

IP : HUVEC cells,

Background Information

ESM1 is a secreted protein mainly expressed in the endothelial cells. The deduced 184-amino acid protein is cysteine rich with an N-terminal hydrophobic signal sequence. Expression of ESM1 was tested by Northern blot analysis and RT-PCR and was found to be constitutive in a HUVEC cell line, but not in any other cell line tested. Constitutive ESM1 expression in human tissue was restricted to lung.

Storage

Storage:

Store at -20°C. Stable for one year after shipment.

Storage Buffer:

PBS with 0.02% sodium azide and 50% glycerol pH 7.3.

Aliquoting is unnecessary for -20°C storage

For technical support and original validation data for this product please contact:

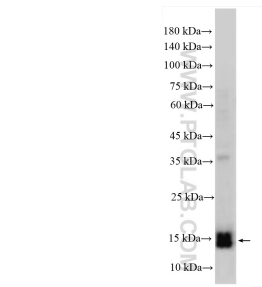
T: 4006900926

E: Proteintech-CN@ptglab.com

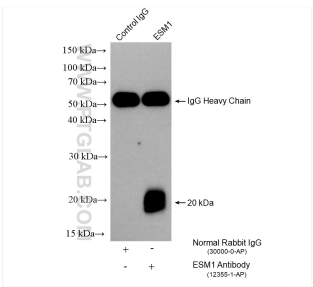
W: ptgcn.com

This product is exclusively available under Proteintech Group brand and is not available to purchase from any other manufacturer.

Selected Validation Data



HUVEC cells were subjected to SDS PAGE followed by western blot with 12355-1-AP (ESM1 antibody) at dilution of 1:300 incubated at room temperature for 1.5 hours.



IP result of anti-ESM1 (IP:12355-1-AP, 4ug; Detection:12355-1-AP 1:300) with HUVEC cells lysate 640 ug.