

For Research Use Only

# RAB3IP/Rabin8 Polyclonal antibody

Catalog Number:12321-1-AP

Featured Product

20 Publications



## Basic Information

### Catalog Number:

12321-1-AP

### Concentration:

800 ug/ml

### Source:

Rabbit

### Isotype:

IgG

### Immunogen Catalog Number:

AG2974

### GenBank Accession Number:

BC015548

### GeneID (NCBI):

117177

### UNIPROT ID:

Q96QF0

### Full Name:

RAB3A interacting protein (rabin3)

### Calculated MW:

476 aa, 53 kDa

### Observed MW:

53/51/43 kDa

### Purification Method:

Antigen affinity purification

### Recommended Dilutions:

WB 1:500-1:3000

IP 0.5-4.0 ug for 1.0-3.0 mg of total protein lysate

IHC 1:400-1:1600

IF/ICC 1:50-1:500

## Applications

### Tested Applications:

WB, IHC, IF/ICC, IP, ELISA

### Cited Applications:

WB, IF, IP

### Species Specificity:

human, mouse, rat

### Cited Species:

human, mouse, rat, canine

### Positive Controls:

**WB** : mouse brain tissue, human heart tissue, mouse lung tissue, human brain tissue, mouse heart tissue, rat brain tissue

**IP** : mouse lung tissue,

**IHC** : human stomach cancer tissue,

**IF/ICC** : HepG2 cells,

**Note-IHC: suggested antigen retrieval with TE buffer pH 9.0; (\*) Alternatively, antigen retrieval may be performed with citrate buffer pH 6.0**

## Background Information

RAB3IP, also known as Rabin8, is a deduced 476-amino acid protein containing a central coiled-coil domain, a bipartite nuclear localization signal, and a C-terminal endoplasmic reticulum retention motif. Rabin8 has several sites for N-glycosylation and phosphorylation. Rabin8 plays important roles in various cellular processes, including ciliogenesis. The GEF activity of Rabin8 towards Rab8 is essential for ciliogenesis and cyst apical membrane transport, but not for exocytosis of discoidal/fusiform-shaped vesicles. This antibody can recognize isoforms with predicted MWs of 53 kDa, 51 kDa, 43 kDa, 45 kDa, 33 kDa and 35 kDa, 29 kDa respectively.

## Notable Publications

Author	Pubmed ID	Journal	Application
Kubilay Demir	24035388	Cell Rep	WB
Yu-Chiang Lai	26471730	EMBO J	WB
Michael C Burke	25313408	J Cell Biol	WB

## Storage

### Storage:

Store at -20°C. Stable for one year after shipment.

### Storage Buffer:

PBS with 0.02% sodium azide and 50% glycerol pH 7.3.

Aliquoting is unnecessary for -20°C storage

For technical support and original validation data for this product please contact:

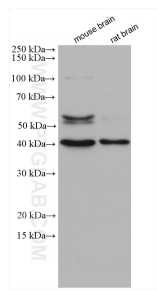
T: 4006900926

E: [Proteintech-CN@ptglab.com](mailto:Proteintech-CN@ptglab.com)

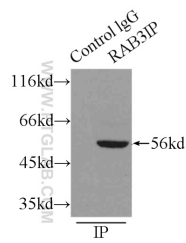
W: [ptgcn.com](http://ptgcn.com)

This product is exclusively available under Proteintech Group brand and is not available to purchase from any other manufacturer.

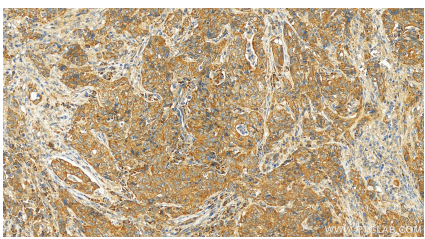
Selected Validation Data



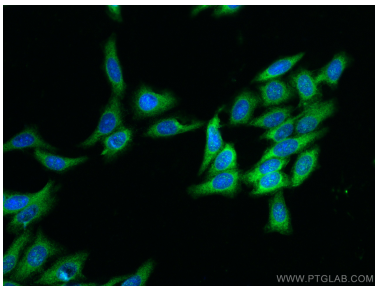
Various lysates were subjected to SDS PAGE followed by western blot with 12321-1-AP (RAB3IP antibody) at dilution of 1:1500 incubated at room temperature for 1.5 hours.



IP result of anti-RAB3IP (IP:12321-1-AP, 3ug; Detection:12321-1-AP 1:1000) with mouse lung tissue lysate 4500ug.



Immunohistochemical analysis of paraffin-embedded human stomach cancer tissue slide using 12321-1-AP (RAB3IP antibody) at dilution of 1:800 (under 20x lens). Heat mediated antigen retrieval with Tris-EDTA buffer (pH 9.0).



Immunofluorescent analysis of (-20°C Ethanol) fixed HepG2 cells using RAB3IP/Rabin8 antibody (12321-1-AP) at dilution of 1:200 and CoraLite®488-Conjugated AffiniPure Goat Anti-Rabbit IgG(H+L).