

CRB3 Polyclonal antibody

Catalog Number: 12315-1-AP

Basic Information

Catalog Number: 12315-1-AP	GenBank Accession Number: BC018409	Purification Method: Antigen affinity purification
Size: 450 µg/ml	GeneID (NCBI): 92359	Recommended Dilutions: IHC 1:50-1:500
Source: Rabbit	UNIPROT ID: Q9BUF7	
Isotype: IgG	Full Name: crumbs homolog 3 (Drosophila)	
Immunogen Catalog Number: AG2968	Calculated MW: 123 aa, 13 kDa	

Applications

Tested Applications: IHC, ELISA	Positive Controls:
Species Specificity: human	IHC : human pancreas tissue, human skeletal muscle tissue

Note-IHC: suggested antigen retrieval with TE buffer pH 9.0; (*) Alternatively, antigen retrieval may be performed with citrate buffer pH 6.0

Background Information

Crumbs is an apical transmembrane protein crucial for epithelial morphogenesis in *Drosophila melanogaster* embryos. Three isoforms of mammalian Crumbs have been identified, and two have been characterized. Crumbs1 (CRB1) is expressed primarily in the central nervous system, whereas Crumbs3 (CRB3) is mainly expressed in epithelial tissues and skeletal muscles. CRB3 is an N-glycosylated, small transmembrane protein. CRB3 has a conserved cytoplasmic domain containing the two motives GTY and ERL1 found in Crumbs, but exhibits a very short extracellular domain without the EGF- and laminin A-like G repeats present in the other Crumbs. Through its cytoplasmic domain and its interactors (e.g., Pals1 and Par6), CRB3 plays a role in apical membrane morphogenesis and tight junction regulation. (PMID: 14718572; 12527193; 15976445)

Storage

Storage:
Store at -20°C. Stable for one year after shipment.
Storage Buffer:
PBS with 0.02% sodium azide and 50% glycerol pH 7.3.
Aliquoting is unnecessary for -20°C storage

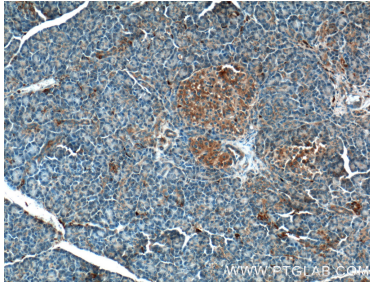
For technical support and original validation data for this product please contact:

T: 4006900926

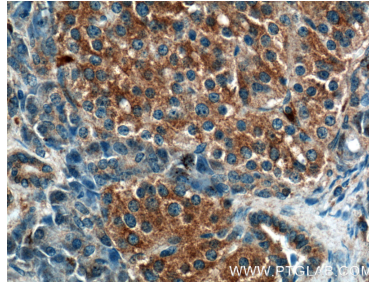
E: Proteintech-CN@ptglab.comW: ptgcn.com

This product is exclusively available under Proteintech Group brand and is not available to purchase from any other manufacturer.

Selected Validation Data



Immunohistochemical analysis of paraffin-embedded human pancreas tissue slide using 12315-1-AP (CRB3 Antibody) at dilution of 1:200 (under 10x lens).



Immunohistochemical analysis of paraffin-embedded human pancreas tissue slide using 12315-1-AP (CRB3 Antibody) at dilution of 1:200 (under 40x lens).