

For Research Use Only

GNPDA1 Polyclonal antibody

Catalog Number: 12312-1-AP

Featured Product

3 Publications



Basic Information

Catalog Number:

12312-1-AP

Size:

650 µg/ml

Source:

Rabbit

Isotype:

IgG

Immunogen Catalog Number:

AG2961

GenBank Accession Number:

BC012853

GeneID (NCBI):

10007

UNIPROT ID:

P46926

Full Name:

glucosamine-6-phosphate deaminase

1

Calculated MW:

289 aa, 33 kDa

Observed MW:

33 kDa

Purification Method:

Antigen affinity purification

Recommended Dilutions:

WB 1:500-1:2000

IHC 1:20-1:200

Applications

Tested Applications:

IHC, WB, ELISA

Cited Applications:

WB, IHC

Species Specificity:

human, mouse, rat

Cited Species:

human

Note-IHC: suggested antigen retrieval with TE buffer pH 9.0; (*) Alternatively, antigen retrieval may be performed with citrate buffer pH 6.0

Positive Controls:

WB : K-562 cells, HeLa cells, human brain tissue, rat kidney tissue

IHC : human pancreas cancer tissue,

Background Information

GNPDA1 (glucosamine-6-phosphate isomerase 1) is also named as GNPI, HLN, KIAA0060 and belongs to the glucosamine/galactosamine-6-phosphate isomerase family. It catalyzes the reversible conversion of D-glucosamine-6-phosphate (GlcN6P) into D-fructose-6-phosphate (Fru6P) and ammonium (PMID:12965206). It may be playing an essential role for egg activation and early embryo development. GNPI is expressed as a 33-kD cytosolic protein in various cell lines (PMID: 9714720).

Notable Publications

Author	Pubmed ID	Journal	Application
Yajuan Zhao	34557495	Front Cell Dev Biol	IHC
Dezhi Li	32606980	Cancer Manag Res	WB
Sanna Oikari	26887390	Glycobiology	WB

Storage

Storage:

Store at -20°C. Stable for one year after shipment.

Storage Buffer:

PBS with 0.02% sodium azide and 50% glycerol pH 7.3.

Aliquoting is unnecessary for -20°C storage

For technical support and original validation data for this product please contact:

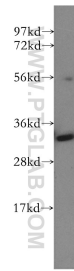
T: 4006900926

E: Proteintech-CN@ptglab.com

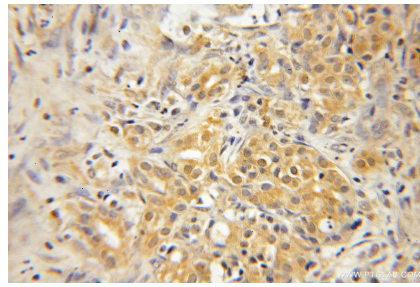
W: ptgcn.com

This product is exclusively available under Proteintech Group brand and is not available to purchase from any other manufacturer.

Selected Validation Data



K-562 cells were subjected to SDS PAGE followed by western blot with 12312-1-AP (GNPDA1 antibody) at dilution of 1:400 incubated at room temperature for 1.5 hours.



Immunohistochemical analysis of paraffin-embedded human pancreas cancer using 12312-1-AP (GNPDA1 antibody) at dilution of 1:50 (under 10x lens).