

# GEMIN6 Polyclonal antibody

Catalog Number: 12307-2-AP

2 Publications

## Basic Information

## Catalog Number:

12307-2-AP

## Size:

750 µg/ml

## Source:

Rabbit

## Isotype:

IgG

## Immunogen Catalog Number:

AG2954

## GenBank Accession Number:

BC018195

## GeneID (NCBI):

79833

## UNIPROT ID:

Q8WXD5

## Full Name:

gem (nuclear organelle) associated protein 6

## Calculated MW:

167 aa, 19 kDa

## Observed MW:

19 kDa

## Purification Method:

Antigen affinity purification

## Recommended Dilutions:

WB 1:200-1:1000

IHC 1:50-1:500

IF/ICC 1:50-1:500

## Applications

## Tested Applications:

WB, IHC, IF/ICC, ELISA

## Cited Applications:

WB

## Species Specificity:

human

## Cited Species:

human

## Positive Controls:

WB : HEK-293 cells, HeLa cells

IHC : human breast cancer tissue,

IF/ICC : PC-3 cells,

**Note-IHC: suggested antigen retrieval with TE buffer pH 9.0; (\*) Alternatively, antigen retrieval may be performed with citrate buffer pH 6.0**

## Background Information

GEMIN6, also named as SIP2, is a subunit of SMN complex. It plays an important role in the splicing of cellular pre-mRNAs.

## Notable Publications

Author	Pubmed ID	Journal	Application
Anne-Sophie Gribling-Burrer	28115638	Nucleic Acids Res	WB
Jonathan Bizarro	26275778	Nucleic Acids Res	WB

## Storage

## Storage:

Store at -20°C. Stable for one year after shipment.

## Storage Buffer:

PBS with 0.02% sodium azide and 50% glycerol pH 7.3.

Aliquoting is unnecessary for -20°C storage

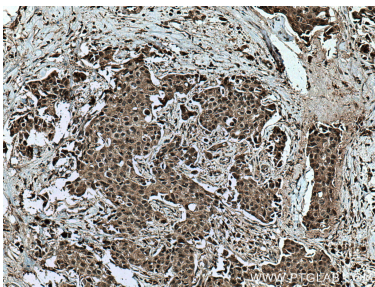
For technical support and original validation data for this product please contact:

T: 4006900926

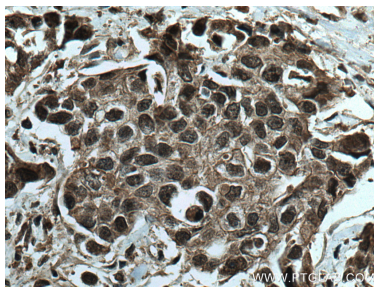
E: [Proteintech-CN@ptglab.com](mailto:Proteintech-CN@ptglab.com)W: [ptgcn.com](http://ptgcn.com)

**This product is exclusively available under Proteintech Group brand and is not available to purchase from any other manufacturer.**

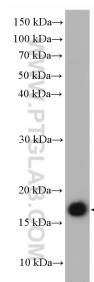
## Selected Validation Data



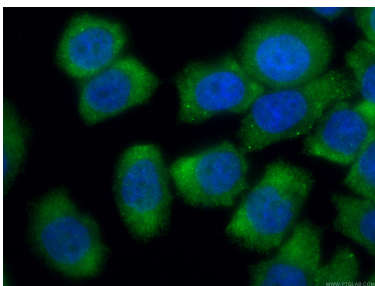
Immunohistochemical analysis of paraffin-embedded human breast cancer tissue slide using 12307-2-AP (GEMIN6 antibody) at dilution of 1:200 (under 10x lens). Heat mediated antigen retrieval with Tris-EDTA buffer (pH 9.0).



Immunohistochemical analysis of paraffin-embedded human breast cancer tissue slide using 12307-2-AP (GEMIN6 antibody) at dilution of 1:200 (under 40x lens). Heat mediated antigen retrieval with Tris-EDTA buffer (pH 9.0).



HEK-293 cells were subjected to SDS PAGE followed by western blot with 12307-2-AP (GEMIN6 antibody) at dilution of 1:300 incubated at room temperature for 1.5 hours.



Immunofluorescent analysis of (4% PFA) fixed PC-3 cells using 12307-2-AP (GEMIN6 antibody) at dilution of 1:100 and CoraLite488-Conjugated AffiniPure Goat Anti-Rabbit IgG(H+L).